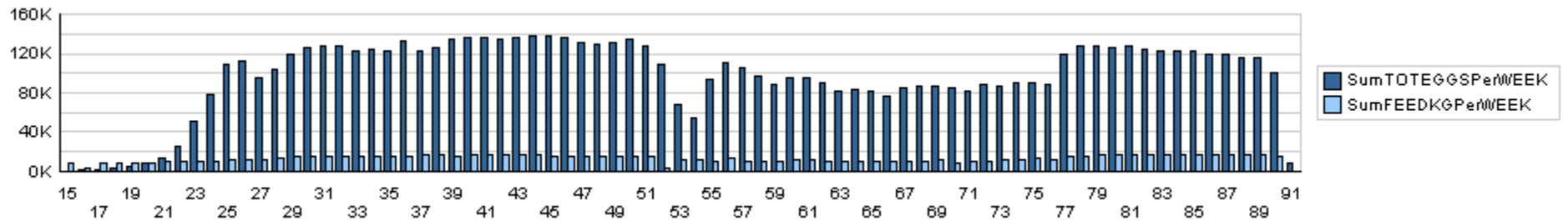
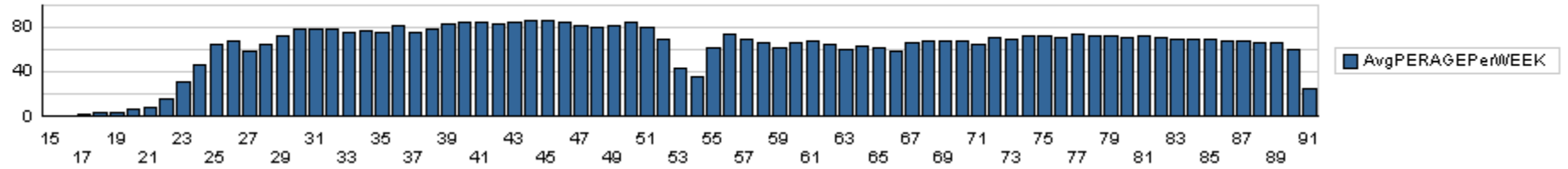


WEEKLY FLOCK SUMMERY

WEEKLY PRODUCTION % AGE



Flock	FLOCK 6		Shedname	CTL_LAY_1		Total Birds	33919										
Birdtype						Shed Capic	35000										
Week	15	FLOCK DETAIL AND DEPLETION							FEED CONSUMPTION			EGGS PRODUCTION					
Wdays	Days	Edate	Opening Birds	Total Mortilty	Mortilty Ratio	Culling	Hen Sale	Total Depletior	Closing Birds	Bags 50 kg	Total Kilo Grams	Gram/Hen	Total Eggs	Broken Eggs	Remeggs	Eggs Crate(360)	Eggs Prod %
1	105	30-AUG-11	24385	3	.012302645069	0	0	3	24382	26	1300	53.32	0	0	0	0	0.0
2	106	31-AUG-11	24382	1	.004101386269	0	0	1	24381	26	1300	53.32	1	0	1	0	0.0
3	107	01-SEP-11	24381	2	.008203108978	0	0	2	24379	23	1150	47.17	2	0	2	0	0.0
4	108	02-SEP-11	24379	6	.02461134583	0	0	6	24373	23	1150	47.18	3	0	3	0	0.0
5	109	03-SEP-11	24373	4	.016411603003	0	0	4	24369	23	1150	47.19	18	0	18	0	0.1
6	110	04-SEP-11	24369	2	.008207148426	0	0	2	24367	12	600	24.62	23	0	23	0	0.1
7	111	05-SEP-11	24367	2	.008207822054	0	0	2	24365	24	1200	49.25	33	0	33	0	0.1
			20			0	0	20		157	7850		80	0	80	.22222222	0.00

Week	16	FLOCK DETAIL AND DEPLETION							FEED CONSUMPTION			EGGS PRODUCTION					
Wdays	Days	Edate	Opening Birds	Total Mortilty	Mortilty Ratio	Culling	Hen Sale	Total Depletior	Closing Birds	Bags 50 kg	Total Kilo Grams	Gram/Hen	Total Eggs	Broken Eggs	Remeggs	Eggs Crate(360)	Eggs Prod %
1	112	06-SEP-11	24365	2	.008208495793	0	0	2	24363	14	700	28.73	33	0	33	0	0.1
2	113	07-SEP-11	24363	6	.024627508927	0	0	6	24357	9	450	18.48	60	0	60	0	0.2
3	114	08-SEP-11	24357	1	.004105595927	0	0	1	24356	0	0	0.00	111	30	81	0	0.3
4	115	09-SEP-11	24356	3	.01231729348	0	0	3	24353	4	200	8.21	120	120	0	0	0.3
5	116	10-SEP-11	24353	1	.004106270275	0	0	1	24352	17	850	34.90	180	30	150	1	0.5
6	117	11-SEP-11	24352	5	.020532194481	0	0	5	24347	16	800	32.86	210	30	180	1	0.6

WEEKLY FLOCK SUMMERY

Flock		FLOCK 6			Shedname		CTL_LAY_1			Total Birds		33919						
Birdtype										Shed Capic		35000						
Week		16			FEED CONSUMPTION							EGGS PRODUCTION						
Wdays	Days	Edate	Opening Birds	Total Mortilty	Mortilty Ratio	Culling	Hen Sale	Total Depletior	Closing Birds	Bags 50 kg	Total Kilo Grams	Gram/Hen	Total Eggs	Broken Eggs	Remeggs	Eggs Crate(360)	Eggs Prod %	
7	118	12-SEP-11	24347	3	.012321846634	0	0	3	24344	20	1000	41.08	210	30	180	1	0.6	
				21			0	0	21	80	4000			924	240	684	2.566667	0.43

Week		17			FLOCK DETAIL AND DEPLETION							FEED CONSUMPTION			EGGS PRODUCTION				
Wdays	Days	Edate	Opening Birds	Total Mortilty	Mortilty Ratio	Culling	Hen Sale	Total Depletior	Closing Birds	Bags 50 kg	Total Kilo Grams	Gram/Hen	Total Eggs	Broken Eggs	Remeggs	Eggs Crate(360)	Eggs Prod %		
1	119	13-SEP-11	24344	3	.0123233651	0	0	3	24341	20	1000	41.08	180	30	150	1	0.5		
2	120	14-SEP-11	24341	5	.020541473234	0	342	5	23994	20	1000	41.09	180	0	180	1	0.5		
3	121	15-SEP-11	23994	4	.016670834375	0	0	4	23990	25	1250	52.11	360	180	180	2	1.0		
4	122	16-SEP-11	23990	3	.012505210504	0	0	3	23987	25	1250	52.11	180	30	150	1	0.5		
5	123	17-SEP-11	23987	3	.012506774503	0	0	3	23984	25	1250	52.12	180	30	150	1	0.5		
6	124	18-SEP-11	23984	1	.004169446298	0	0	1	23983	25	1250	52.12	360	30	330	2	1.0		
7	125	19-SEP-11	23983	2	.008339240295	0	0	2	23981	25	1250	52.12	360	30	330	2	1.0		
				21			0	342	21	165	8250			1800	330	1470	5	1.43	

Week		18			FLOCK DETAIL AND DEPLETION							FEED CONSUMPTION			EGGS PRODUCTION				
Wdays	Days	Edate	Opening Birds	Total Mortilty	Mortilty Ratio	Culling	Hen Sale	Total Depletior	Closing Birds	Bags 50 kg	Total Kilo Grams	Gram/Hen	Total Eggs	Broken Eggs	Remeggs	Eggs Crate(360)	Eggs Prod %		
1	126	20-SEP-11	23981	1	.004169967891	0	0	1	23980	25	1250	52.13	360	30	330	2	1.0		
2	127	21-SEP-11	23980	1	.004170141785	0	0	1	23979	29	1450	60.47	360	30	330	2	1.0		
3	128	22-SEP-11	23979	3	.012510947079	0	0	3	23976	22	1100	45.88	360	30	330	2	1.0		
4	129	23-SEP-11	23976	3	.012512512513	0	0	3	23973	22	1100	45.89	540	30	510	2	1.5		
5	130	24-SEP-11	23973	5	.02085679723	0	0	5	23968	7	350	14.60	600	30	570	3	1.7		
6	131	25-SEP-11	23968	2	.008344459279	0	0	2	23966	38	1900	79.28	600	30	570	3	1.7		
7	132	26-SEP-11	23966	2	.008345155637	0	0	2	23964	27	1350	56.33	720	30	690	3	2.0		
				17			0	0	17	170	8500			3540	210	3330	9.8333333	2.43	

Week		19			FLOCK DETAIL AND DEPLETION							FEED CONSUMPTION			EGGS PRODUCTION				
Wdays	Days	Edate	Opening Birds	Total Mortilty	Mortilty Ratio	Culling	Hen Sale	Total Depletior	Closing Birds	Bags 50 kg	Total Kilo Grams	Gram/Hen	Total Eggs	Broken Eggs	Remeggs	Eggs Crate(360)	Eggs Prod %		
1	133	27-SEP-11	23964	3	.012518778167	0	0	3	23961	27	1350	56.34	720	30	690	3	2.0		
2	134	28-SEP-11	23961	10	.041734485205	0	0	10	23951	24	1200	50.10	720	30	690	3	2.0		
3	135	29-SEP-11	23951	10	.04175191015	0	0	10	23941	28	1400	58.48	720	30	690	3	2.0		
4	136	30-SEP-11	23941	6	.025061609791	0	0	6	23935	29	1450	60.58	720	30	690	3	2.0		
5	137	01-OCT-11	23935	4	.016711928139	0	0	4	23931	25	1250	52.23	720	30	690	3	2.0		
6	138	02-OCT-11	23931	9	.037608123355	0	0	9	23922	27	1350	56.43	900	30	870	4	2.5		
7	139	03-OCT-11	23922	0	0	0	0	0	23922	25	1250	52.25	960	90	870	4	2.7		
				42			0	0	42	185	9250			5460	270	5190	15.166667	3.29	

WEEKLY FLOCK SUMMERY

Flock		FLOCK 6		Shedname		CTL_LAY_1		Total Birds		33919		Birdtype		Shed Capic		35000	
Week		20		FLOCK DETAIL AND DEPLETION						FEED CONSUMPTION			EGGS PRODUCTION				
Wdays	Days	Edate	Opening Birds	Total Mortilty	Mortilty Ratio	Culling	Hen Sale	Total Depletion	Closing Birds	Bags 50 kg	Total Kilo Grams	Gram/Hen	Total Eggs	Broken Eggs	Remeggs	Eggs Crate(360)	Eggs Prod %
1	140	04-OCT-11	23922	0	0	0	0	0	23922	25	1250	52.25	1080	90	990	5	3.0
2	141	05-OCT-11	23922	2	.008360504975	0	0	2	23920	26	1300	54.35	1080	90	990	5	3.0
3	142	06-OCT-11	23920	1	.004180602007	0	0	1	23919	26	1300	54.35	1080	90	990	5	3.0
4	143	07-OCT-11	23919	0	0	0	0	0	23919	26	1300	54.35	1260	90	1170	5	3.5
5	144	08-OCT-11	23919	1	.004180776788	0	0	1	23918	29	1450	60.62	1440	90	1350	6	4.0
6	145	09-OCT-11	23918	0	0	0	0	0	23918	27	1350	56.44	1440	90	1350	6	4.0
7	146	10-OCT-11	23918	2	.008361903169	0	0	2	23916	27	1350	56.45	1620	90	1530	7	4.5
				6			0	0	6	186	9300		9000	630	8370	25	5.57

Week		21		FLOCK DETAIL AND DEPLETION						FEED CONSUMPTION			EGGS PRODUCTION				
Wdays	Days	Edate	Opening Birds	Total Mortilty	Mortilty Ratio	Culling	Hen Sale	Total Depletion	Closing Birds	Bags 50 kg	Total Kilo Grams	Gram/Hen	Total Eggs	Broken Eggs	Remeggs	Eggs Crate(360)	Eggs Prod %
1	147	11-OCT-11	23916	8	.033450409768	0	0	8	23908	27	1350	56.47	1620	90	1530	7	4.5
2	148	12-OCT-11	23908	19	.079471306676	0	0	19	23889	27	1350	56.51	1620	90	1530	7	4.5
3	149	13-OCT-11	23889	19	.079534513793	0	0	19	23870	27	1350	56.56	1620	90	1530	7	4.5
4	150	14-OCT-11	23870	13	.054461667365	0	0	13	23857	27	1350	56.59	1980	90	1890	8	5.5
5	151	15-OCT-11	23857	18	.07544955359	0	0	18	23839	27	1350	56.63	1980	90	1890	8	5.5
6	152	16-OCT-11	23839	10	.041948068291	0	0	10	23829	27	1350	56.65	1980	90	1890	8	5.5
7	153	17-OCT-11	23829	1	.004196567208	0	0	1	23828	27	1350	56.66	2340	90	2250	10	6.5
				88			0	0	88	189	9450		13140	630	12510	36.5	7.86

Week		22		FLOCK DETAIL AND DEPLETION						FEED CONSUMPTION			EGGS PRODUCTION				
Wdays	Days	Edate	Opening Birds	Total Mortilty	Mortilty Ratio	Culling	Hen Sale	Total Depletion	Closing Birds	Bags 50 kg	Total Kilo Grams	Gram/Hen	Total Eggs	Broken Eggs	Remeggs	Eggs Crate(360)	Eggs Prod %
1	154	18-OCT-11	23828	4	.016786973309	0	0	4	23824	27	1350	56.67	2520	90	2430	11	7.0
2	155	19-OCT-11	23824	0	0	0	0	0	23824	27	1350	56.67	3060	90	2970	13	8.5
3	156	20-OCT-11	23824	0	0	0	0	0	23824	28	1400	58.76	3420	120	3300	14	9.5
4	157	21-OCT-11	23824	1	.004197447952	0	0	1	23823	28	1400	58.77	3780	120	3660	16	10.5
5	158	22-OCT-11	23823	1	.004197624145	0	0	1	23822	33	1650	69.26	3960	120	3840	17	11.0
6	159	23-OCT-11	23822	0	0	0	0	0	23822	32	1600	67.16	4320	120	4200	18	12.0
7	160	24-OCT-11	23822	1	.004197800353	0	0	1	23821	33	1650	69.27	5040	120	4920	21	14.0
				7			0	0	7	208	10400		26100	780	25320	72.5	15.71

Week		23		FLOCK DETAIL AND DEPLETION						FEED CONSUMPTION			EGGS PRODUCTION				
Wdays	Days	Edate	Opening Birds	Total Mortilty	Mortilty Ratio	Culling	Hen Sale	Total Depletion	Closing Birds	Bags 50 kg	Total Kilo Grams	Gram/Hen	Total Eggs	Broken Eggs	Remeggs	Eggs Crate(360)	Eggs Prod %
1	161	25-OCT-11	23821	2	.008395953151	0	0	2	23819	32	1600	67.17	5580	120	5460	23	15.5
2	162	26-OCT-11	23819	3	.012594987195	0	0	3	23816	33	1650	69.28	5760	120	5640	24	16.0

WEEKLY FLOCK SUMMERY

Flock		FLOCK 6		Shedname		CTL_LAY_1		Total Birds		33919								
Birdtype								Shed Capic		35000								
Week		23		FEED CONSUMPTION						EGGS PRODUCTION								
Wdays	Days	Edate	Opening Birds	Total Mortilty	Mortilty Ratio	Culling	Hen Sale	Total Depletior	Closing Birds	Bags 50 kg	Total Kilo Grams	Gram/Hen	Total Eggs	Broken Eggs	Remeggs	Eggs Crate(360)	Eggs Prod %	
3	163	27-OCT-11	23816	1	.004198857911	0	0	1	23815	31	1550	65.09	6660	120	6540	28	18.5	
4	164	28-OCT-11	23815	4	.016796136889	0	0	4	23811	32	1600	67.20	7020	120	6900	29	19.5	
5	165	29-OCT-11	23811	0	0	0	0	0	23811	27	1350	56.70	8100	120	7980	34	22.5	
6	166	30-OCT-11	23811	2	.008399479232	0	0	2	23809	33	1650	69.30	8640	120	8520	36	24.0	
7	167	31-OCT-11	23809	2	.008400184804	0	0	2	23807	32	1600	67.21	8820	120	8700	37	24.5	
				14			0	0	14	220	11000			50580	840	49740	140.5	30.14

Week		24		FLOCK DETAIL AND DEPLETION						FEED CONSUMPTION			EGGS PRODUCTION					
Wdays	Days	Edate	Opening Birds	Total Mortilty	Mortilty Ratio	Culling	Hen Sale	Total Depletior	Closing Birds	Bags 50 kg	Total Kilo Grams	Gram/Hen	Total Eggs	Broken Eggs	Remeggs	Eggs Crate(360)	Eggs Prod %	
1	168	01-NOV-11	23807	0	0	0	0	0	23807	33	1650	69.31	9180	120	9060	39	25.5	
2	169	02-NOV-11	23807	2	.008400890494	0	0	2	23805	33	1650	69.31	10260	120	10140	43	28.5	
3	170	03-NOV-11	23805	2	.008401596303	0	0	2	23803	33	1650	69.32	11340	120	11220	48	31.5	
4	171	04-NOV-11	23803	1	.004201151115	0	0	1	23802	33	1650	69.32	10800	120	10680	45	30.0	
5	172	05-NOV-11	23802	2	.008402655239	0	0	2	23800	33	1650	69.33	11160	120	11040	47	31.0	
6	173	06-NOV-11	23800	3	.012605042017	0	0	3	23797	23	1150	48.33	12600	120	12480	53	35.0	
7	174	07-NOV-11	23797	3	.012606631088	0	0	3	23794	33	1650	69.35	12600	120	12480	53	35.0	
				13			0	0	13	221	11050			77940	840	77100	216.5	46.86

Week		25		FLOCK DETAIL AND DEPLETION						FEED CONSUMPTION			EGGS PRODUCTION					
Wdays	Days	Edate	Opening Birds	Total Mortilty	Mortilty Ratio	Culling	Hen Sale	Total Depletior	Closing Birds	Bags 50 kg	Total Kilo Grams	Gram/Hen	Total Eggs	Broken Eggs	Remeggs	Eggs Crate(360)	Eggs Prod %	
1	175	08-NOV-11	23794	3	.01260822056	0	0	3	23791	35	1750	73.56	12960	120	12840	54	36.0	
2	176	09-NOV-11	23791	6	.025219620865	0	0	6	23785	35	1750	73.58	14040	120	13920	59	39.0	
3	177	10-NOV-11	23785	5	.021021652302	0	0	5	23780	35	1750	73.59	14760	120	14640	62	41.0	
4	178	11-NOV-11	23780	8	.033641715728	0	0	8	23772	35	1750	73.62	15840	120	15720	67	44.0	
5	179	12-NOV-11	23772	19	.079925963318	0	0	19	23753	35	1750	73.67	16380	120	16260	69	45.5	
6	180	13-NOV-11	23753	25	.105249863175	0	0	25	23728	35	1750	73.75	17460	120	17340	74	48.5	
7	181	14-NOV-11	23728	33	.139076196898	0	0	33	23695	35	1750	73.86	16920	120	16800	71	47.0	
				99			0	0	99	245	12250			108360	840	107520	301	65.14

Week		26		FLOCK DETAIL AND DEPLETION						FEED CONSUMPTION			EGGS PRODUCTION				
Wdays	Days	Edate	Opening Birds	Total Mortilty	Mortilty Ratio	Culling	Hen Sale	Total Depletior	Closing Birds	Bags 50 kg	Total Kilo Grams	Gram/Hen	Total Eggs	Broken Eggs	Remeggs	Eggs Crate(360)	Eggs Prod %
1	182	15-NOV-11	23695	26	.109727790673	0	0	26	23669	35	1750	73.94	17460	240	17220	74	48.5
2	183	16-NOV-11	23669	29	.122523131522	0	0	29	23640	35	1750	74.03	17280	240	17040	73	48.0
3	184	17-NOV-11	23640	23	.097292724196	0	0	23	23617	35	1750	74.10	17280	240	17040	73	48.0
4	185	18-NOV-11	23617	35	.14819833171	0	0	35	23582	32	1600	67.85	16740	240	16500	71	46.5

WEEKLY FLOCK SUMMERY

Flock		FLOCK 6		Shedname		CTL_LAY_1		Total Birds		33919		Birdtype		Shed Capic		35000	
Week		26		FEED CONSUMPTION						EGGS PRODUCTION							
Wdays	Days	Edate	Opening Birds	Total Mortilty	Mortilty Ratio	Culling	Hen Sale	Total Depletion	Closing Birds	Bags 50 kg	Total Kilo Grams	Gram/Hen	Total Eggs	Broken Eggs	Remeggs	Eggs Crate(360)	Eggs Prod %
5	186	19-NOV-11	23582	25	.106013060809	0	0	25	23557	32	1600	67.92	15120	240	14880	64	42.0
6	187	20-NOV-11	23557	35	.148575794881	0	0	35	23522	35	1750	74.40	15120	240	14880	64	42.0
7	188	21-NOV-11	23522	13	.055267409234	0	0	13	23509	35	1750	74.44	13680	240	13440	58	38.0
				186			0	0	186	239	11950		112680	1680	111000	313	68.14

Week		27		FLOCK DETAIL AND DEPLETION						FEED CONSUMPTION			EGGS PRODUCTION				
Wdays	Days	Edate	Opening Birds	Total Mortilty	Mortilty Ratio	Culling	Hen Sale	Total Depletion	Closing Birds	Bags 50 kg	Total Kilo Grams	Gram/Hen	Total Eggs	Broken Eggs	Remeggs	Eggs Crate(360)	Eggs Prod %
1	189	22-NOV-11	23509	14	.059551661066	0	0	14	23495	35	1750	74.48	13680	240	13440	58	38.0
2	190	23-NOV-11	23495	14	.059587146201	0	0	14	23481	35	1750	74.53	13680	240	13440	58	38.0
3	191	24-NOV-11	23481	11	.04684638644	0	0	11	23470	35	1750	74.56	13500	240	13260	58	37.5
4	192	25-NOV-11	23470	7	.029825308905	0	0	7	23463	35	1750	74.59	13500	240	13260	58	37.5
5	193	26-NOV-11	23463	12	.051144354942	0	0	12	23451	35	1750	74.62	13860	240	13620	59	38.5
6	194	27-NOV-11	23451	7	.02984947337	0	0	7	23444	35	1750	74.65	13140	240	12900	56	36.5
7	195	28-NOV-11	23444	10	.042654837059	0	0	10	23434	40	2000	85.35	13860	240	13620	59	38.5
				75			0	0	75	250	12500		95220	1680	93540	264.5	58.00

Week		28		FLOCK DETAIL AND DEPLETION						FEED CONSUMPTION			EGGS PRODUCTION				
Wdays	Days	Edate	Opening Birds	Total Mortilty	Mortilty Ratio	Culling	Hen Sale	Total Depletion	Closing Birds	Bags 50 kg	Total Kilo Grams	Gram/Hen	Total Eggs	Broken Eggs	Remeggs	Eggs Crate(360)	Eggs Prod %
1	196	29-NOV-11	23434	5	.021336519587	0	0	5	23429	39	1950	83.23	13860	240	13620	59	38.5
2	197	30-NOV-11	23429	11	.046950360664	0	0	11	23418	38	1900	81.13	14580	240	14340	62	40.5
3	198	01-DEC-11	23418	4	.017080877957	6	0	10	23408	42	2100	89.71	14580	240	14340	62	40.5
4	199	02-DEC-11	23408	3	.012816131237	8	0	11	23397	42	2100	89.76	15120	240	14880	65	42.0
5	200	03-DEC-11	23397	2	.008548104458	16	0	18	23379	42	2100	89.82	15480	240	15240	66	43.0
6	201	04-DEC-11	23379	3	.012832028744	12	0	15	23364	43	2150	92.02	15120	240	14880	65	42.0
7	202	05-DEC-11	23364	1	.004280089026	12	0	13	23351	42	2100	89.93	15840	360	15480	68	44.0
				29			54	0	83	288	14400		104580	1800	102780	290.5	63.86

Week		29		FLOCK DETAIL AND DEPLETION						FEED CONSUMPTION			EGGS PRODUCTION				
Wdays	Days	Edate	Opening Birds	Total Mortilty	Mortilty Ratio	Culling	Hen Sale	Total Depletion	Closing Birds	Bags 50 kg	Total Kilo Grams	Gram/Hen	Total Eggs	Broken Eggs	Remeggs	Eggs Crate(360)	Eggs Prod %
1	203	06-DEC-11	23351	3	.012847415528	11	0	14	23337	42	2100	89.99	16200	360	15840	69	45.0
2	204	07-DEC-11	23337	2	.008570081844	11	0	13	23324	42	2100	90.04	16920	360	16560	73	47.0
3	205	08-DEC-11	23324	30	.128622877723	5	0	35	23289	42	2100	90.17	17640	360	17280	76	49.0
4	206	09-DEC-11	23289	3	.012881617931	6	0	9	23280	45	2250	96.65	17280	360	16920	74	48.0
5	207	10-DEC-11	23280	2	.008591065292	5	0	7	23273	45	2250	96.68	16920	360	16560	73	47.0
6	208	11-DEC-11	23273	4	.017187298586	5	0	9	23264	45	2250	96.72	16200	360	15840	70	45.0

WEEKLY FLOCK SUMMERY

Flock		FLOCK 6		Shedname		CTL_LAY_1		Total Birds		33919								
Birdtype								Shed Capic		35000								
Week		29		FEED CONSUMPTION						EGGS PRODUCTION								
Wdays	Days	Edate	Opening Birds	Total Mortilty	Mortilty Ratio	Culling	Hen Sale	Total Depletior	Closing Birds	Bags 50 kg	Total Kilo Grams	Gram/Hen	Total Eggs	Broken Eggs	Remeggs	Eggs Crate(360)	Eggs Prod %	
7	209	12-DEC-11	23264	3	.012895460798	3	0	6	23258	45	2250	96.74	17280	360	16920	74	48.0	
				47			46	0	93			306	15300	118440	2520	115920	329	72.71

Week		30		FLOCK DETAIL AND DEPLETION						FEED CONSUMPTION			EGGS PRODUCTION					
Wdays	Days	Edate	Opening Birds	Total Mortilty	Mortilty Ratio	Culling	Hen Sale	Total Depletior	Closing Birds	Bags 50 kg	Total Kilo Grams	Gram/Hen	Total Eggs	Broken Eggs	Remeggs	Eggs Crate(360)	Eggs Prod %	
1	210	13-DEC-11	23258	2	.008599191676	3	0	5	23253	45	2250	96.76	17640	360	17280	76	49.0	
2	211	14-DEC-11	23253	4	.017202081452	3	0	7	23246	43	2150	92.49	17640	360	17280	76	49.0	
3	212	15-DEC-11	23246	2	.008603630732	3	0	5	23241	43	2150	92.51	17820	360	17460	77	49.5	
4	213	16-DEC-11	23241	2	.008605481692	2	0	4	23237	43	2150	92.52	18360	360	18000	79	51.0	
5	214	17-DEC-11	23237	0	0	4	0	4	23233	46	2300	99.00	18180	360	17820	78	50.5	
6	215	18-DEC-11	23233	1	.004304222442	2	0	3	23230	46	2300	99.01	18540	360	18180	80	51.5	
7	216	19-DEC-11	23230	3	.012914334912	3	0	6	23224	46	2300	99.04	18540	360	18180	80	51.5	
				14			20	0	34			312	15600	126720	2520	124200	352	78.00

Week		31		FLOCK DETAIL AND DEPLETION						FEED CONSUMPTION			EGGS PRODUCTION					
Wdays	Days	Edate	Opening Birds	Total Mortilty	Mortilty Ratio	Culling	Hen Sale	Total Depletior	Closing Birds	Bags 50 kg	Total Kilo Grams	Gram/Hen	Total Eggs	Broken Eggs	Remeggs	Eggs Crate(360)	Eggs Prod %	
1	217	20-DEC-11	23224	3	.012917671374	3	0	6	23218	46	2300	99.06	18180	360	17820	78	50.5	
2	218	21-DEC-11	23218	4	.017228012749	2	0	6	23212	46	2300	99.09	18360	400	17960	79	51.0	
3	219	22-DEC-11	23212	0	0	2	0	2	23210	46	2300	99.10	18180	400	17780	78	50.5	
4	220	23-DEC-11	23210	1	.004308487721	2	0	3	23207	46	2300	99.11	18360	400	17960	79	51.0	
5	221	24-DEC-11	23207	0	0	2	0	2	23205	46	2300	99.12	18540	300	18240	80	51.5	
6	222	25-DEC-11	23205	2	.008618832148	1	0	3	23202	46	2300	99.13	17820	300	17520	77	49.5	
7	223	26-DEC-11	23202	3	.012929919834	0	0	3	23199	46	2300	99.14	17640	360	17280	76	49.0	
				13			12	0	25			322	16100	127080	2520	124560	353	78.14

Week		32		FLOCK DETAIL AND DEPLETION						FEED CONSUMPTION			EGGS PRODUCTION					
Wdays	Days	Edate	Opening Birds	Total Mortilty	Mortilty Ratio	Culling	Hen Sale	Total Depletior	Closing Birds	Bags 50 kg	Total Kilo Grams	Gram/Hen	Total Eggs	Broken Eggs	Remeggs	Eggs Crate(360)	Eggs Prod %	
1	224	27-DEC-11	23199	1	.004310530626	3	0	4	23195	46	2300	99.16	18000	360	17640	78	50.0	
2	225	28-DEC-11	23195	2	.008622547963	0	0	2	23193	46	2300	99.17	18360	360	18000	79	51.0	
3	226	29-DEC-11	23193	1	.004311645755	2	0	3	23190	46	2300	99.18	18000	360	17640	78	50.0	
4	227	30-DEC-11	23190	1	.004312203536	2	0	3	23187	46	2300	99.19	18180	360	17820	78	50.5	
5	228	31-DEC-11	23187	1	.004312761461	0	0	1	23186	46	2300	99.20	18360	360	18000	79	51.0	
6	229	01-JAN-12	23186	3	.012938842405	0	0	3	23183	46	2300	99.21	18720	360	18360	81	52.0	
7	230	02-JAN-12	23183	3	.012940516758	0	0	3	23180	46	2300	99.22	18000	360	17640	78	50.0	
				12			7	0	19			322	16100	127620	2520	125100	354.5	78.71

WEEKLY FLOCK SUMMERY

Flock		FLOCK 6		Shedname		CTL_LAY_1		Total Birds		33919		Birttype		Shed Capic		35000	
Week		33		FLOCK DETAIL AND DEPLETION						FEED CONSUMPTION			EGGS PRODUCTION				
Wday	Days	Edate	Opening Birds	Total Mortilty	Mortilty Ratio	Culling	Hen Sale	Total Depletion	Closing Birds	Bags 50 kg	Total Kilo Grams	Gram/Hen	Total Eggs	Broken Eggs	Remeggs	Eggs Crate(360)	Eggs Prod %
1	231	03-JAN-12	23180	2	.008628127696	0	0	2	23178	46	2300	99.23	18360	360	18000	79	51.0
2	232	04-JAN-12	23178	2	.008628872206	0	0	2	23176	46	2300	99.24	11160	360	10800	48	31.0
3	233	05-JAN-12	23176	4	.01725923369	0	0	4	23172	46	2300	99.26	18720	360	18360	81	52.0
4	234	06-JAN-12	23172	4	.017262213016	3	0	7	23165	46	2300	99.29	18720	360	18360	81	52.0
5	235	07-JAN-12	23165	2	.008633714656	2	0	4	23161	46	2300	99.30	18900	360	18540	82	52.5
6	236	08-JAN-12	23161	5	.021588014334	0	0	5	23156	46	2300	99.33	18540	360	18180	80	51.5
7	237	09-JAN-12	23156	2	.008637070306	0	0	2	23154	46	2300	99.33	18720	360	18360	81	52.0
				21		5	0	26		322	16100		123120	2520	120600	342	76.00

Week		34		FLOCK DETAIL AND DEPLETION						FEED CONSUMPTION			EGGS PRODUCTION				
Wday	Days	Edate	Opening Birds	Total Mortilty	Mortilty Ratio	Culling	Hen Sale	Total Depletion	Closing Birds	Bags 50 kg	Total Kilo Grams	Gram/Hen	Total Eggs	Broken Eggs	Remeggs	Eggs Crate(360)	Eggs Prod %
1	238	10-JAN-12	23154	1	.00431890818	0	0	1	23153	46	2300	99.34	18540	360	18180	80	51.5
2	239	11-JAN-12	23153	4	.017276378871	3	0	7	23146	46	2300	99.37	18180	480	17700	79	50.5
3	240	12-JAN-12	23146	1	.004320400933	0	0	1	23145	46	2300	99.37	18000	480	17520	78	50.0
4	241	13-JAN-12	23145	1	.0043205876	0	0	1	23144	46	2300	99.38	18000	480	17520	78	50.0
5	242	14-JAN-12	23144	8	.034566194262	0	0	8	23136	46	2300	99.41	18000	480	17520	78	50.0
6	243	15-JAN-12	23136	1	.004322268326	0	0	1	23135	46	2300	99.42	17280	480	16800	75	48.0
7	244	16-JAN-12	23135	1	.004322455155	0	0	1	23134	46	2300	99.42	16560	480	16080	72	46.0
				17		3	0	20		322	16100		124560	3240	121320	346	77.14

Week		35		FLOCK DETAIL AND DEPLETION						FEED CONSUMPTION			EGGS PRODUCTION				
Wday	Days	Edate	Opening Birds	Total Mortilty	Mortilty Ratio	Culling	Hen Sale	Total Depletion	Closing Birds	Bags 50 kg	Total Kilo Grams	Gram/Hen	Total Eggs	Broken Eggs	Remeggs	Eggs Crate(360)	Eggs Prod %
1	245	17-JAN-12	23134	2	.008645283998	0	0	2	23132	46	2300	99.43	17280	480	16800	75	48.0
2	246	18-JAN-12	23132	0	0	1	0	1	23131	46	2300	99.43	17640	480	17160	76	49.0
3	247	19-JAN-12	23131	3	.012969607886	0	0	3	23128	46	2300	99.45	16920	480	16440	73	47.0
4	248	20-JAN-12	23128	4	.017295053615	0	0	4	23124	46	2300	99.46	17100	480	16620	74	47.5
5	249	21-JAN-12	23124	1	.00432451133	2	0	3	23121	46	2300	99.48	17460	480	16980	76	48.5
6	250	22-JAN-12	23121	0	0	0	0	0	23121	46	2300	99.48	17820	480	17340	77	49.5
7	251	23-JAN-12	23121	1	.004325072445	0	0	1	23120	46	2300	99.48	18540	480	18060	80	51.5
				11		3	0	14		322	16100		122760	3360	119400	341	75.86

Week		36		FLOCK DETAIL AND DEPLETION						FEED CONSUMPTION			EGGS PRODUCTION				
Wday	Days	Edate	Opening Birds	Total Mortilty	Mortilty Ratio	Culling	Hen Sale	Total Depletion	Closing Birds	Bags 50 kg	Total Kilo Grams	Gram/Hen	Total Eggs	Broken Eggs	Remeggs	Eggs Crate(360)	Eggs Prod %
1	252	24-JAN-12	23120	0	0	0	0	0	23120	46	2300	99.48	18540	480	18060	80	51.5
2	253	25-JAN-12	23120	2	.008650519031	0	0	2	23118	46	2300	99.49	18540	480	18060	80	51.5

WEEKLY FLOCK SUMMERY

Flock		FLOCK 6		Shedname		CTL_LAY_1		Total Birds		33919		Birdtype		Shed Capic		35000		
Week		36		FEED CONSUMPTION						EGGS PRODUCTION								
Wdays	Days	Edate	Opening Birds	Total Mortilty	Mortilty Ratio	Culling	Hen Sale	Total Depletior	Closing Birds	Bags 50 kg	Total Kilo Grams	Gram/Hen	Total Eggs	Broken Eggs	Remeggs	Eggs Crate(360)	Eggs Prod %	
3	254	26-JAN-12	23118	2	.008651267411	1	0	3	23115	46	2300	99.50	18900	480	18420	82	52.5	
4	255	27-JAN-12	23115	0	0	0	0	0	23115	46	2300	99.50	19260	480	18780	83	53.5	
5	256	28-JAN-12	23115	1	.004326195111	5	0	6	23109	46	2300	99.53	19260	480	18780	83	53.5	
6	257	29-JAN-12	23109	0	0	0	0	0	23109	46	2300	99.53	19260	480	18780	83	53.5	
7	258	30-JAN-12	23109	1	.004327318361	2	0	3	23106	46	2300	99.54	18900	480	18420	82	52.5	
				6			8	0	14	322		16100		132660	3360	129300	368.5	81.86

Week		37		FLOCK DETAIL AND DEPLETION						FEED CONSUMPTION			EGGS PRODUCTION					
Wdays	Days	Edate	Opening Birds	Total Mortilty	Mortilty Ratio	Culling	Hen Sale	Total Depletior	Closing Birds	Bags 50 kg	Total Kilo Grams	Gram/Hen	Total Eggs	Broken Eggs	Remeggs	Eggs Crate(360)	Eggs Prod %	
1	259	31-JAN-12	23106	0	0	0	0	0	23106	46	2300	99.54	18720	480	18240	81	52.0	
2	260	01-FEB-12	23106	2	.008655760409	0	0	2	23104	46	2300	99.55	19260	480	18780	83	53.5	
3	261	02-FEB-12	23104	2	.008656509695	0	0	2	23102	46	2300	99.56	19260	480	18780	83	53.5	
4	262	03-FEB-12	23102	1	.004328629556	0	0	1	23101	50	2500	108.22	18720	480	18240	81	52.0	
5	263	04-FEB-12	23101	3	.012986450803	5	0	8	23093	50	2500	108.26	15120	720	14400	65	42.0	
6	264	05-FEB-12	23093	3	.012990949638	5	0	8	23085	50	2500	108.30	15120	720	14400	65	42.0	
7	265	06-FEB-12	23085	4	.017327268789	0	0	4	23081	58	2900	125.64	16200	1440	14760	70	45.0	
				15			10	0	25	346		17300		122400	4800	117600	340	75.43

Week		38		FLOCK DETAIL AND DEPLETION						FEED CONSUMPTION			EGGS PRODUCTION					
Wdays	Days	Edate	Opening Birds	Total Mortilty	Mortilty Ratio	Culling	Hen Sale	Total Depletior	Closing Birds	Bags 50 kg	Total Kilo Grams	Gram/Hen	Total Eggs	Broken Eggs	Remeggs	Eggs Crate(360)	Eggs Prod %	
1	266	07-FEB-12	23081	3	.012997703739	0	0	3	23078	50	2500	108.33	16560	960	15600	72	46.0	
2	267	08-FEB-12	23078	1	.004333131121	2	0	3	23075	50	2500	108.34	17640	480	17160	76	49.0	
3	268	09-FEB-12	23075	1	.004333694475	0	0	1	23074	50	2500	108.35	18180	600	17580	79	50.5	
4	269	10-FEB-12	23074	4	.017335529167	2	0	6	23068	50	2500	108.38	18540	600	17940	80	51.5	
5	270	11-FEB-12	23068	1	.004335009537	0	0	1	23067	50	2500	108.38	18540	480	18060	80	51.5	
6	271	12-FEB-12	23067	0	0	2	0	2	23065	50	2500	108.39	18540	480	18060	80	51.5	
7	272	13-FEB-12	23065	4	.017342293518	2	0	6	23059	50	2500	108.42	18360	480	17880	80	51.0	
				14			8	0	22	350		17500		126360	4080	122280	351	78.14

Week		39		FLOCK DETAIL AND DEPLETION						FEED CONSUMPTION			EGGS PRODUCTION				
Wdays	Days	Edate	Opening Birds	Total Mortilty	Mortilty Ratio	Culling	Hen Sale	Total Depletior	Closing Birds	Bags 50 kg	Total Kilo Grams	Gram/Hen	Total Eggs	Broken Eggs	Remeggs	Eggs Crate(360)	Eggs Prod %
1	273	14-FEB-12	23059	3	.013010104515	0	0	3	23056	45	2250	97.59	18360	480	17880	80	51.0
2	274	15-FEB-12	23056	1	.004337265788	0	0	1	23055	45	2250	97.59	18720	480	18240	81	52.0
3	275	16-FEB-12	23055	3	.013012361744	2	0	5	23050	45	2250	97.61	19260	480	18780	84	53.5
4	276	17-FEB-12	23050	3	.013015184382	10	0	13	23037	45	2250	97.67	19260	480	18780	84	53.5

WEEKLY FLOCK SUMMERY

Flock		FLOCK 6		Shedname		CTL_LAY_1		Total Birds		33919		Birdtype		Shed Capic		35000	
Week		39		FEED CONSUMPTION						EGGS PRODUCTION							
Wdays	Days	Edate	Opening Birds	Total Mortilty	Mortilty Ratio	Culling	Hen Sale	Total Depletion	Closing Birds	Bags 50 kg	Total Kilo Grams	Gram/Hen	Total Eggs	Broken Eggs	Remeggs	Eggs Crate(360)	Eggs Prod %
5	277	18-FEB-12	23037	1	.004340842992	0	0	1	23036	45	2250	97.67	19260	480	18780	84	53.5
6	278	19-FEB-12	23036	2	.008682062858	2	0	4	23032	48	2400	104.20	19440	480	18960	84	54.0
7	279	20-FEB-12	23032	6	.026050712053	0	0	6	23026	48	2400	104.23	19440	480	18960	84	54.0
				19			14	0	33	321	16050		133740	3360	130380	371.5	83.00

Week		40		FLOCK DETAIL AND DEPLETION						FEED CONSUMPTION			EGGS PRODUCTION				
Wdays	Days	Edate	Opening Birds	Total Mortilty	Mortilty Ratio	Culling	Hen Sale	Total Depletion	Closing Birds	Bags 50 kg	Total Kilo Grams	Gram/Hen	Total Eggs	Broken Eggs	Remeggs	Eggs Crate(360)	Eggs Prod %
1	280	21-FEB-12	23026	0	0	0	0	0	23026	46	2300	99.89	19440	580	18860	84	54.0
2	281	22-FEB-12	23026	2	.008685833406	0	0	2	23024	46	2300	99.90	19620	430	19190	85	54.5
3	282	23-FEB-12	23024	0	0	0	0	0	23024	46	2300	99.90	19620	430	19190	85	54.5
4	283	24-FEB-12	23024	2	.008686587908	0	0	2	23022	48	2400	104.25	19440	430	19010	84	54.0
5	284	25-FEB-12	23022	2	.008687342542	10	0	12	23010	48	2400	104.30	19440	430	19010	84	54.0
6	285	26-FEB-12	23010	1	.004345936549	0	0	1	23009	48	2400	104.31	19440	430	19010	84	54.0
7	286	27-FEB-12	23009	3	.013038376288	0	0	3	23006	48	2400	104.32	19260	430	18830	84	53.5
				10			10	0	20	330	16500		136260	3160	133100	378.5	84.29

Week		41		FLOCK DETAIL AND DEPLETION						FEED CONSUMPTION			EGGS PRODUCTION				
Wdays	Days	Edate	Opening Birds	Total Mortilty	Mortilty Ratio	Culling	Hen Sale	Total Depletion	Closing Birds	Bags 50 kg	Total Kilo Grams	Gram/Hen	Total Eggs	Broken Eggs	Remeggs	Eggs Crate(360)	Eggs Prod %
1	287	28-FEB-12	23006	1	.004346692167	0	0	1	23005	46	2300	99.98	19260	430	18830	84	53.5
2	288	29-FEB-12	23005	1	.004346881113	0	0	1	23004	46	2300	99.98	19620	430	19190	85	54.5
3	289	01-MAR-12	23004	3	.013041210224	0	0	3	23001	46	2300	100.00	19440	430	19010	85	54.0
4	290	02-MAR-12	23001	1	.004347637059	0	0	1	23000	46	2300	100.00	19440	400	19040	85	54.0
5	291	03-MAR-12	23000	1	.004347826087	0	0	1	22999	46	2300	100.00	19620	430	19190	85	54.5
6	292	04-MAR-12	22999	2	.008696030262	1	0	3	22996	48	2400	104.37	19620	430	19190	85	54.5
7	293	05-MAR-12	22996	2	.008697164724	0	0	2	22994	46	2300	100.03	19440	430	19010	85	54.0
				11			1	0	12	324	16200		136440	2980	133460	379	84.86

Week		42		FLOCK DETAIL AND DEPLETION						FEED CONSUMPTION			EGGS PRODUCTION				
Wdays	Days	Edate	Opening Birds	Total Mortilty	Mortilty Ratio	Culling	Hen Sale	Total Depletion	Closing Birds	Bags 50 kg	Total Kilo Grams	Gram/Hen	Total Eggs	Broken Eggs	Remeggs	Eggs Crate(360)	Eggs Prod %
1	294	06-MAR-12	22994	2	.008697921197	0	0	2	22992	46	2300	100.03	19080	430	18650	83	53.0
2	295	07-MAR-12	22992	2	.008698677801	0	0	2	22990	48	2400	104.39	19620	430	19190	85	54.5
3	296	08-MAR-12	22990	1	.004349717268	0	0	1	22989	48	2400	104.40	19260	430	18830	84	53.5
4	297	09-MAR-12	22989	1	.004349906477	0	0	1	22988	46	2300	100.05	19080	430	18650	83	53.0
5	298	10-MAR-12	22988	2	.008700191404	1	0	3	22985	48	2400	104.42	19080	430	18650	83	53.0
6	299	11-MAR-12	22985	3	.013051990429	0	0	3	22982	48	2400	104.43	19440	430	19010	85	54.0

WEEKLY FLOCK SUMMERY

Flock		FLOCK 6			Shedname		CTL_LAY_1			Total Birds		33919						
Birdtype										Shed Capic		35000						
Week		42			FEED CONSUMPTION							EGGS PRODUCTION						
Wdays	Days	Edate	Opening Birds	Total Mortilty	Mortilty Ratio	Culling	Hen Sale	Total Depletior	Closing Birds	Bags 50 kg	Total Kilo Grams	Gram/Hen	Total Eggs	Broken Eggs	Remeggs	Eggs Crate(360)	Eggs Prod %	
7	300	12-MAR-12	22982	1	.004351231398	1	0	2	22980	48	2400	104.44	19080	430	18650	83	53.0	
				12			2	0	14	332		16600		134640	3010	131630	374	83.71

Week		43			FLOCK DETAIL AND DEPLETION							FEED CONSUMPTION			EGGS PRODUCTION				
Wdays	Days	Edate	Opening Birds	Total Mortilty	Mortilty Ratio	Culling	Hen Sale	Total Depletior	Closing Birds	Bags 50 kg	Total Kilo Grams	Gram/Hen	Total Eggs	Broken Eggs	Remeggs	Eggs Crate(360)	Eggs Prod %		
1	301	13-MAR-12	22980	2	.008703220191	0	0	2	22978	46	2300	100.10	19080	430	18650	83	53.0		
2	302	14-MAR-12	22978	4	.017407955436	0	0	4	22974	48	2400	104.47	19080	430	18650	83	53.0		
3	303	15-MAR-12	22974	2	.008705493166	0	0	2	22972	48	2400	104.48	19260	430	18830	84	53.5		
4	304	16-MAR-12	22972	2	.008706251088	0	0	2	22970	48	2400	104.48	19620	430	19190	85	54.5		
5	305	17-MAR-12	22970	0	0	0	0	0	22970	48	2400	104.48	19620	430	19190	85	54.5		
6	306	18-MAR-12	22970	1	.004353504571	0	0	1	22969	49	2450	106.67	19440	430	19010	85	54.0		
7	307	19-MAR-12	22969	2	.008707388219	0	0	2	22967	49	2450	106.67	19440	430	19010	85	54.0		
				13			0	0	13	336		16800		135540	3010	132530	376.5	84.29	

Week		44			FLOCK DETAIL AND DEPLETION							FEED CONSUMPTION			EGGS PRODUCTION				
Wdays	Days	Edate	Opening Birds	Total Mortilty	Mortilty Ratio	Culling	Hen Sale	Total Depletior	Closing Birds	Bags 50 kg	Total Kilo Grams	Gram/Hen	Total Eggs	Broken Eggs	Remeggs	Eggs Crate(360)	Eggs Prod %		
1	308	20-MAR-12	22967	2	.008708146471	0	0	2	22965	48	2400	104.51	19440	430	19010	85	54.0		
2	309	21-MAR-12	22965	0	0	0	0	0	22965	48	2400	104.51	19620	460	19160	85	54.5		
3	310	22-MAR-12	22965	1	.004354452428	0	0	1	22964	48	2400	104.51	19800	460	19340	86	55.0		
4	311	23-MAR-12	22964	2	.008709284097	0	0	2	22962	48	2400	104.52	19800	460	19340	86	55.0		
5	312	24-MAR-12	22962	3	.013065064019	0	0	3	22959	46	2300	100.18	19440	480	18960	85	54.0		
6	313	25-MAR-12	22959	2	.008711180801	0	0	2	22957	46	2300	100.19	19800	480	19320	86	55.0		
7	314	26-MAR-12	22957	2	.008711939713	0	0	2	22955	46	2300	100.20	19800	480	19320	86	55.0		
				12			0	0	12	330		16500		137700	3250	134450	382.5	85.57	

Week		45			FLOCK DETAIL AND DEPLETION							FEED CONSUMPTION			EGGS PRODUCTION				
Wdays	Days	Edate	Opening Birds	Total Mortilty	Mortilty Ratio	Culling	Hen Sale	Total Depletior	Closing Birds	Bags 50 kg	Total Kilo Grams	Gram/Hen	Total Eggs	Broken Eggs	Remeggs	Eggs Crate(360)	Eggs Prod %		
1	315	27-MAR-12	22955	3	.013069048138	0	0	3	22952	46	2300	100.21	19800	360	19440	86	55.0		
2	316	28-MAR-12	22952	2	.008713837574	0	0	2	22950	46	2300	100.22	19800	360	19440	86	55.0		
3	317	29-MAR-12	22950	2	.00871459695	0	0	2	22948	46	2300	100.23	19800	360	19440	86	55.0		
4	318	30-MAR-12	22948	1	.004357678229	0	0	1	22947	46	2300	100.23	19620	360	19260	86	54.5		
5	319	31-MAR-12	22947	11	.04793654944	2	0	13	22934	46	2300	100.29	19260	360	18900	84	53.5		
6	320	01-APR-12	22934	0	0	0	0	0	22934	46	2300	100.29	19440	360	19080	85	54.0		
7	321	02-APR-12	22934	2	.008720676725	0	0	2	22932	46	2300	100.30	19800	360	19440	86	55.0		
				21			2	0	23	322		16100		137520	2520	135000	382	85.57	

WEEKLY FLOCK SUMMERY

Flock		FLOCK 6			Shedname		CTL_LAY_1			Total Birds		33919						
Birdtype										Shed Capic		35000						
Week		46			FLOCK DETAIL AND DEPLETION						FEED CONSUMPTION			EGGS PRODUCTION				
Wdays	Days	Edate	Opening Birds	Total Mortilty	Mortilty Ratio	Culling	Hen Sale	Total Depletion	Closing Birds	Bags 50 kg	Total Kilo Grams	Gram/Hen	Total Eggs	Broken Eggs	Remeggs	Eggs Crate(360)	Eggs Prod %	
1	322	03-APR-12	22932	2	.008721437293	0	0	2	22930	46	2300	100.31	19800	400	19400	86	55.0	
2	323	04-APR-12	22930	1	.004361098997	0	0	1	22929	46	2300	100.31	19800	400	19400	86	55.0	
3	324	05-APR-12	22929	1	.004361289197	0	0	1	22928	46	2300	100.31	19800	400	19400	86	55.0	
4	325	06-APR-12	22928	2	.008722958828	0	0	2	22926	46	2300	100.32	19260	400	18860	84	53.5	
5	326	07-APR-12	22926	6	.026171159382	0	0	6	22920	46	2300	100.35	19620	400	19220	86	54.5	
6	327	08-APR-12	22920	6	.026178010471	0	0	6	22914	46	2300	100.38	19440	400	19040	85	54.0	
7	328	09-APR-12	22914	2	.008728288383	0	0	2	22912	46	2300	100.38	19260	400	18860	84	53.5	
				20			0	0	20	322		16100		136980	2800	134180	380.5	85.29

Week		47			FLOCK DETAIL AND DEPLETION						FEED CONSUMPTION			EGGS PRODUCTION				
Wdays	Days	Edate	Opening Birds	Total Mortilty	Mortilty Ratio	Culling	Hen Sale	Total Depletion	Closing Birds	Bags 50 kg	Total Kilo Grams	Gram/Hen	Total Eggs	Broken Eggs	Remeggs	Eggs Crate(360)	Eggs Prod %	
1	329	10-APR-12	22912	3	.013093575419	0	0	3	22909	45	2250	98.21	19080	400	18680	83	53.0	
2	330	11-APR-12	22909	2	.008730193374	0	0	2	22907	45	2250	98.22	18900	540	18360	83	52.5	
3	331	12-APR-12	22907	1	.004365477802	0	0	1	22906	45	2250	98.23	18360	540	17820	80	51.0	
4	332	13-APR-12	22906	7	.030559678687	0	0	7	22899	45	2250	98.26	18360	540	17820	80	51.0	
5	333	14-APR-12	22899	2	.008734005852	0	0	2	22897	45	2250	98.27	18540	540	18000	81	51.5	
6	334	15-APR-12	22897	3	.01310215312	0	0	3	22894	45	2250	98.28	18720	540	18180	82	52.0	
7	335	16-APR-12	22894	2	.00873591334	0	0	2	22892	42	2100	91.74	19080	400	18680	83	53.0	
				20			0	0	20	312		15600		131040	3500	127540	364	81.71

Week		48			FLOCK DETAIL AND DEPLETION						FEED CONSUMPTION			EGGS PRODUCTION				
Wdays	Days	Edate	Opening Birds	Total Mortilty	Mortilty Ratio	Culling	Hen Sale	Total Depletion	Closing Birds	Bags 50 kg	Total Kilo Grams	Gram/Hen	Total Eggs	Broken Eggs	Remeggs	Eggs Crate(360)	Eggs Prod %	
1	336	17-APR-12	22892	3	.013105014852	0	0	3	22889	42	2100	91.75	18360	400	17960	80	51.0	
2	337	18-APR-12	22889	2	.008737821661	0	0	2	22887	42	2100	91.76	18360	400	17960	80	51.0	
3	338	19-APR-12	22887	2	.008738585223	0	0	2	22885	42	2100	91.76	18000	400	17600	79	50.0	
4	339	20-APR-12	22885	2	.008739348919	0	0	2	22883	42	2100	91.77	18000	400	17600	79	50.0	
5	340	21-APR-12	22883	3	.013110169121	0	0	3	22880	42	2100	91.78	18360	400	17960	80	51.0	
6	341	22-APR-12	22880	0	0	0	0	0	22880	42	2100	91.78	18720	400	18320	82	52.0	
7	342	23-APR-12	22880	2	.008741258741	0	0	2	22878	42	2100	91.79	18720	400	18320	82	52.0	
				14			0	0	14	294		14700		128520	2800	125720	357	80.29

Week		49			FLOCK DETAIL AND DEPLETION						FEED CONSUMPTION			EGGS PRODUCTION				
Wdays	Days	Edate	Opening Birds	Total Mortilty	Mortilty Ratio	Culling	Hen Sale	Total Depletion	Closing Birds	Bags 50 kg	Total Kilo Grams	Gram/Hen	Total Eggs	Broken Eggs	Remeggs	Eggs Crate(360)	Eggs Prod %	
1	343	24-APR-12	22878	0	0	0	0	0	22878	42	2100	91.79	19260	400	18860	84	53.5	
2	344	25-APR-12	22878	4	.017484045808	0	0	4	22874	45	2250	98.37	19080	400	18680	83	53.0	

WEEKLY FLOCK SUMMERY

Flock		FLOCK 6			Shedname		CTL_LAY_1			Total Birds		33919							
Birdtype															Shed Capic		35000		
Week		49																	
										FEED CONSUMPTION			EGGS PRODUCTION						
Wdays	Days	Edate	Opening Birds	Total Mortilty	Mortilty Ratio	Culling	Hen Sale	Total Depletion	Closing Birds	Bags 50 kg	Total Kilo Grams	Gram/Hen	Total Eggs	Broken Eggs	Remeggs	Eggs Crate(360)	Eggs Prod %		
3	345	26-APR-12	22874	3	.013115327446	0	0	3	22871	45	2250	98.38	18360	400	17960	80	51.0		
4	346	27-APR-12	22871	8	.034978794106	0	0	8	22863	45	2250	98.41	18720	400	18320	82	52.0		
5	347	28-APR-12	22863	0	0	0	0	0	22863	45	2250	98.41	18720	400	18320	82	52.0		
6	348	29-APR-12	22863	2	.008747758387	0	0	2	22861	45	2250	98.42	18720	400	18320	82	52.0		
7	349	30-APR-12	22861	2	.008748523687	0	0	2	22859	45	2250	98.43	18900	400	18500	83	52.5		
				19				0	0	19	312	15600			131760	2800	128960	366	82.29

Week		50																	
FLOCK DETAIL AND DEPLETION										FEED CONSUMPTION			EGGS PRODUCTION						
Wdays	Days	Edate	Opening Birds	Total Mortilty	Mortilty Ratio	Culling	Hen Sale	Total Depletion	Closing Birds	Bags 50 kg	Total Kilo Grams	Gram/Hen	Total Eggs	Broken Eggs	Remeggs	Eggs Crate(360)	Eggs Prod %		
1	350	01-MAY-12	22859	4	.017498578241	0	0	4	22855	45	2250	98.45	19260	360	18900	84	53.5		
2	351	02-MAY-12	22855	4	.017501640779	0	0	4	22851	45	2250	98.46	19440	360	19080	85	54.0		
3	352	03-MAY-12	22851	4	.017504704389	0	0	4	22847	46	2300	100.67	19440	360	19080	85	54.0		
4	353	04-MAY-12	22847	4	.017507769073	0	0	4	22843	46	2300	100.69	19440	400	19040	85	54.0		
5	354	05-MAY-12	22843	6	.026266252244	0	0	6	22837	46	2300	100.71	19440	280	19160	85	54.0		
6	355	06-MAY-12	22837	11	.048167447563	0	0	11	22826	45	2250	98.57	19080	300	18780	84	53.0		
7	356	07-MAY-12	22826	3	.013142907211	0	0	3	22823	45	2250	98.58	18720	300	18420	82	52.0		
				36				0	0	36	318	15900			134820	2360	132460	374.5	84.29

Week		51																	
FLOCK DETAIL AND DEPLETION										FEED CONSUMPTION			EGGS PRODUCTION						
Wdays	Days	Edate	Opening Birds	Total Mortilty	Mortilty Ratio	Culling	Hen Sale	Total Depletion	Closing Birds	Bags 50 kg	Total Kilo Grams	Gram/Hen	Total Eggs	Broken Eggs	Remeggs	Eggs Crate(360)	Eggs Prod %		
1	357	08-MAY-12	22823	5	.021907724664	0	0	5	22818	45	2250	98.61	18720	300	18420	82	52.0		
2	358	09-MAY-12	22818	43	.188447716715	0	0	43	22775	45	2250	98.79	18180	300	17880	80	50.5		
3	359	10-MAY-12	22775	12	.05268935236	0	0	12	22763	45	2250	98.84	18180	360	17820	80	50.5		
4	360	11-MAY-12	22763	5	.021965470281	0	0	5	22758	42	2100	92.28	17460	360	17100	77	48.5		
5	361	12-MAY-12	22758	3	.013182177696	0	0	3	22755	42	2100	92.29	18540	400	18140	81	51.5		
6	362	13-MAY-12	22755	1	.004394638541	0	0	1	22754	42	2100	92.29	18360	400	17960	81	51.0		
7	363	14-MAY-12	22754	2	.008789663356	0	0	2	22752	42	2100	92.30	18360	400	17960	81	51.0		
				71				0	0	71	303	15150			127800	2520	125280	355	80.29

Week		52															
FLOCK DETAIL AND DEPLETION										FEED CONSUMPTION			EGGS PRODUCTION				
Wdays	Days	Edate	Opening Birds	Total Mortilty	Mortilty Ratio	Culling	Hen Sale	Total Depletion	Closing Birds	Bags 50 kg	Total Kilo Grams	Gram/Hen	Total Eggs	Broken Eggs	Remeggs	Eggs Crate(360)	Eggs Prod %
1	364	15-MAY-12	22752	5	.021976090014	0	0	5	22747	18	900	39.57	18180	400	17780	80	50.5
2	365	16-MAY-12	22747	5	.021980920561	0	0	5	22742	0	0	0.00	17640	400	17240	78	49.0
3	366	17-MAY-12	22742	3	.013191451939	0	0	3	22739	0	0	0.00	17280	760	16520	76	48.0
4	367	18-MAY-12	22739	3	.013193192313	0	0	3	22736	0	0	0.00	16920	940	15980	74	47.0

WEEKLY FLOCK SUMMERY

Flock		FLOCK 6		Shedname		CTL_LAY_1		Total Birds		33919		Birdtype		Shed Capic		35000				
Week		52		FEED CONSUMPTION						EGGS PRODUCTION										
Wdays	Days	Edate	Opening Birds	Total Mortilty	Mortilty Ratio	Culling	Hen Sale	Total Depletion	Closing Birds	Bags 50 kg	Total Kilo Grams	Gram/Hen	Total Eggs	Broken Eggs	Remeggs	Eggs Crate(360)	Eggs Prod %			
5	368	19-MAY-12	22736	6	.026389866291	0	0	6	22730	0	0	0.00	14760	2020	12740	65	41.0			
6	369	20-MAY-12	22730	6	.02639683238	0	0	6	22724	0	0	0.00	12600	2380	10220	55	35.0			
7	370	21-MAY-12	22724	17	.074810772751	0	0	17	22707	38	1900	83.67	12240	2380	9860	54	34.0			
			45			0	0	45				56	2800			109620	9280	100340	304.5	68.86

Week		53		FLOCK DETAIL AND DEPLETION						FEED CONSUMPTION			EGGS PRODUCTION							
Wdays	Days	Edate	Opening Birds	Total Mortilty	Mortilty Ratio	Culling	Hen Sale	Total Depletion	Closing Birds	Bags 50 kg	Total Kilo Grams	Gram/Hen	Total Eggs	Broken Eggs	Remeggs	Eggs Crate(360)	Eggs Prod %			
1	371	22-MAY-12	22707	8	.035231426432	0	0	8	22699	41	2050	90.31	11880	3820	8060	52	33.0			
2	372	23-MAY-12	22699	9	.039649323759	0	0	9	22690	36	1800	79.33	10800	3820	6980	48	30.0			
3	373	24-MAY-12	22690	30	.13221683561	0	0	30	22660	36	1800	79.44	10440	3820	6620	46	29.0			
4	374	25-MAY-12	22660	16	.070609002648	0	0	16	22644	35	1750	77.28	9720	4180	5540	43	27.0			
5	375	26-MAY-12	22644	12	.052994170641	0	0	12	22632	35	1750	77.32	9360	3820	5540	41	26.0			
6	376	27-MAY-12	22632	25	.110463061152	0	0	25	22607	35	1750	77.41	8280	4180	4100	37	23.0			
7	377	28-MAY-12	22607	62	.274251338081	0	0	62	22545	28	1400	62.10	8280	4180	4100	37	23.0			
			162			0	0	162				246	12300			68760	27820	40940	191	43.43

Week		54		FLOCK DETAIL AND DEPLETION						FEED CONSUMPTION			EGGS PRODUCTION							
Wdays	Days	Edate	Opening Birds	Total Mortilty	Mortilty Ratio	Culling	Hen Sale	Total Depletion	Closing Birds	Bags 50 kg	Total Kilo Grams	Gram/Hen	Total Eggs	Broken Eggs	Remeggs	Eggs Crate(360)	Eggs Prod %			
1	378	29-MAY-12	22545	220	.975826125527	0	0	220	22325	34	1700	76.15	7560	3460	4100	34	21.0			
2	379	30-MAY-12	22325	190	.851063829787	0	0	190	22135	26	1300	58.73	6120	3460	2660	28	17.0			
3	380	31-MAY-12	22135	80	.361418567879	0	0	80	22055	32	1600	72.55	5760	3100	2660	26	16.0			
4	381	01-JUN-12	22055	20	.090682384947	0	0	20	22035	31	1550	70.34	6480	2380	4100	29	18.0			
5	382	02-JUN-12	22035	15	.068073519401	0	0	15	22020	22	1100	49.95	7200	2380	4820	33	20.0			
6	383	03-JUN-12	22020	20	.090826521344	0	0	20	22000	56	2800	127.27	10440	1660	8780	47	29.0			
7	384	04-JUN-12	22000	85	.386363636364	0	0	85	21915	28	1400	63.88	11160	1300	9860	51	31.0			
			630			0	0	630				229	11450			54720	17740	36980	152	35.43

Week		55		FLOCK DETAIL AND DEPLETION						FEED CONSUMPTION			EGGS PRODUCTION				
Wdays	Days	Edate	Opening Birds	Total Mortilty	Mortilty Ratio	Culling	Hen Sale	Total Depletion	Closing Birds	Bags 50 kg	Total Kilo Grams	Gram/Hen	Total Eggs	Broken Eggs	Remeggs	Eggs Crate(360)	Eggs Prod %
1	385	05-JUN-12	21915	31	.141455624002	0	0	31	21884	24	1200	54.83	11520	1300	10220	53	32.0
2	386	06-JUN-12	21884	163	.744836410163	0	0	163	21721	27	1350	62.15	12060	940	11120	56	33.5
3	387	07-JUN-12	21721	15	.069057594033	0	0	15	21706	27	1350	62.19	12240	580	11660	56	34.0
4	388	08-JUN-12	21706	20	.092140422003	0	0	20	21686	27	1350	62.25	14580	580	14000	67	40.5
5	389	09-JUN-12	21686	18	.083002858987	0	0	18	21668	29	1450	66.92	14040	1660	12380	65	39.0
6	390	10-JUN-12	21668	15	.069226509138	0	0	15	21653	29	1450	66.97	14940	580	14360	69	41.5

WEEKLY FLOCK SUMMERY

Flock		FLOCK 6			Shedname		CTL_LAY_1			Total Birds		33919						
Birdtype															Shed Capic		35000	
Week		55																
										FEED CONSUMPTION			EGGS PRODUCTION					
Wdays	Days	Edate	Opening Birds	Total Mortilty	Mortilty Ratio	Culling	Hen Sale	Total Depletior	Closing Birds	Bags 50 kg	Total Kilo Grams	Gram/Hen	Total Eggs	Broken Eggs	Remeggs	Eggs Crate(360)	Eggs Prod %	
7	391	11-JUN-12	21653	27	.124694037778	0	0	27	21626	31	1550	71.67	14760	360	14400	68	41.0	
				289			0	0	289	194	9700			94140	6000	88140	261.5	62.00

Week		56																
FLOCK DETAIL AND DEPLETION										FEED CONSUMPTION			EGGS PRODUCTION					
Wdays	Days	Edate	Opening Birds	Total Mortilty	Mortilty Ratio	Culling	Hen Sale	Total Depletior	Closing Birds	Bags 50 kg	Total Kilo Grams	Gram/Hen	Total Eggs	Broken Eggs	Remeggs	Eggs Crate(360)	Eggs Prod %	
1	392	12-JUN-12	21626	9	.041616572644	0	0	9	21617	33	1650	76.33	14940	360	14580	69	41.5	
2	393	13-JUN-12	21617	7	.032381921636	0	0	7	21610	50	2500	115.69	15840	540	15300	73	44.0	
3	394	14-JUN-12	21610	6	.027764923646	0	0	6	21604	30	1500	69.43	15480	540	14940	72	43.0	
4	395	15-JUN-12	21604	23	.10646176634	0	0	23	21581	42	2100	97.31	15840	360	15480	73	44.0	
5	396	16-JUN-12	21581	12	.055604466892	0	0	12	21569	35	1750	81.14	16200	360	15840	75	45.0	
6	397	17-JUN-12	21569	8	.037090268441	0	0	8	21561	35	1750	81.17	16560	360	16200	77	46.0	
7	398	18-JUN-12	21561	11	.051018041835	0	0	11	21550	45	2250	104.41	16560	360	16200	77	46.0	
				76			0	0	76	270	13500			111420	2880	108540	309.5	73.71

Week		57																
FLOCK DETAIL AND DEPLETION										FEED CONSUMPTION			EGGS PRODUCTION					
Wdays	Days	Edate	Opening Birds	Total Mortilty	Mortilty Ratio	Culling	Hen Sale	Total Depletior	Closing Birds	Bags 50 kg	Total Kilo Grams	Gram/Hen	Total Eggs	Broken Eggs	Remeggs	Eggs Crate(360)	Eggs Prod %	
1	399	19-JUN-12	21550	4	.018561484919	0	0	4	21546	35	1750	81.22	16200	360	15840	75	45.0	
2	400	20-JUN-12	21546	6	.027847396268	0	0	6	21540	45	2250	104.46	15840	360	15480	74	44.0	
3	401	21-JUN-12	21540	90	.41782729805	0	0	90	21450	29	1450	67.60	15480	360	15120	72	43.0	
4	402	22-JUN-12	21450	149	.694638694639	0	0	149	21301	19	950	44.60	13680	360	13320	64	38.0	
5	403	23-JUN-12	21301	27	.12675461246	0	0	27	21274	31	1550	72.86	14760	360	14400	69	41.0	
6	404	24-JUN-12	21274	14	.065808028579	0	0	14	21260	29	1450	68.20	14400	720	13680	68	40.0	
7	405	25-JUN-12	21260	19	.089369708373	0	0	19	21241	15	750	35.31	14400	360	14040	68	40.0	
				309			0	0	309	203	10150			104760	2880	101880	291	70.00

Week		58																
FLOCK DETAIL AND DEPLETION										FEED CONSUMPTION			EGGS PRODUCTION					
Wdays	Days	Edate	Opening Birds	Total Mortilty	Mortilty Ratio	Culling	Hen Sale	Total Depletior	Closing Birds	Bags 50 kg	Total Kilo Grams	Gram/Hen	Total Eggs	Broken Eggs	Remeggs	Eggs Crate(360)	Eggs Prod %	
1	406	26-JUN-12	21241	10	.04707876277	0	0	10	21231	45	2250	105.98	14040	360	13680	66	39.0	
2	407	27-JUN-12	21231	10	.047100937309	0	0	10	21221	30	1500	70.68	14040	360	13680	66	39.0	
3	408	28-JUN-12	21221	5	.023561566373	0	0	5	21216	23	1150	54.20	14040	360	13680	66	39.0	
4	409	29-JUN-12	21216	10	.047134238311	0	0	10	21206	40	2000	94.31	14760	360	14400	70	41.0	
5	410	30-JUN-12	21206	24	.113175516363	0	0	24	21182	23	1150	54.29	14400	360	14040	68	40.0	
6	411	01-JUL-12	21182	166	.783684260221	0	0	166	21016	25	1250	59.48	13680	360	13320	65	38.0	
7	412	02-JUL-12	21016	103	.490102778835	0	0	103	20913	23	1150	54.99	12600	360	12240	60	35.0	
				328			0	0	328	209	10450			97560	2520	95040	271	65.86

WEEKLY FLOCK SUMMERY

Flock		FLOCK 6		Shedname		CTL_LAY_1		Total Birds		33919		Birdtype		Shed Capic		35000	
Week		59		FLOCK DETAIL AND DEPLETION						FEED CONSUMPTION			EGGS PRODUCTION				
Wdays	Days	Edate	Opening Birds	Total Mortilty	Mortilty Ratio	Culling	Hen Sale	Total Depletion	Closing Birds	Bags 50 kg	Total Kilo Grams	Gram/Hen	Total Eggs	Broken Eggs	Remeggs	Eggs Crate(360)	Eggs Prod %
1	413	03-JUL-12	20913	105	.502080045904	0	0	105	20808	35	1750	84.10	12600	360	12240	61	35.0
2	414	04-JUL-12	20808	100	.480584390619	0	0	100	20708	25	1250	60.36	12600	360	12240	61	35.0
3	415	05-JUL-12	20708	30	.144871547228	0	0	30	20678	25	1250	60.45	12600	360	12240	61	35.0
4	416	06-JUL-12	20678	38	.183770190541	0	0	38	20640	25	1250	60.56	12960	360	12600	63	36.0
5	417	07-JUL-12	20640	38	.184108527132	0	0	38	20602	25	1250	60.67	12600	360	12240	61	35.0
6	418	08-JUL-12	20602	11	.053392874478	0	0	11	20591	28	1400	67.99	12600	360	12240	61	35.0
7	419	09-JUL-12	20591	3	.014569472099	0	0	3	20588	28	1400	68.00	13320	360	12960	65	37.0
				325		0	0	325		191	9550		89280	2520	86760	248	61.86

Week		60		FLOCK DETAIL AND DEPLETION						FEED CONSUMPTION			EGGS PRODUCTION				
Wdays	Days	Edate	Opening Birds	Total Mortilty	Mortilty Ratio	Culling	Hen Sale	Total Depletion	Closing Birds	Bags 50 kg	Total Kilo Grams	Gram/Hen	Total Eggs	Broken Eggs	Remeggs	Eggs Crate(360)	Eggs Prod %
1	420	10-JUL-12	20588	68	.330289489023	0	0	68	20520	40	2000	97.47	13320	360	12960	65	37.0
2	421	11-JUL-12	20520	95	.462962962963	0	0	95	20425	20	1000	48.96	13320	360	12960	65	37.0
3	422	12-JUL-12	20425	32	.156670746634	0	0	32	20393	30	1500	73.55	13320	360	12960	65	37.0
4	423	13-JUL-12	20393	21	.102976511548	0	0	21	20372	38	1900	93.27	13320	360	12960	65	37.0
5	424	14-JUL-12	20372	17	.083447869625	0	0	17	20355	28	1400	68.78	13320	360	12960	65	37.0
6	425	15-JUL-12	20355	5	.024563989192	0	0	5	20350	38	1900	93.37	13680	360	13320	67	38.0
7	426	16-JUL-12	20350	4	.019656019656	0	0	4	20346	40	2000	98.30	14220	360	13860	70	39.5
				242		0	0	242		234	11700		94500	2520	91980	262.5	66.00

Week		61		FLOCK DETAIL AND DEPLETION						FEED CONSUMPTION			EGGS PRODUCTION				
Wdays	Days	Edate	Opening Birds	Total Mortilty	Mortilty Ratio	Culling	Hen Sale	Total Depletion	Closing Birds	Bags 50 kg	Total Kilo Grams	Gram/Hen	Total Eggs	Broken Eggs	Remeggs	Eggs Crate(360)	Eggs Prod %
1	427	17-JUL-12	20346	15	.073724565025	0	0	15	20331	27	1350	66.40	13680	300	13380	67	38.0
2	428	18-JUL-12	20331	10	.049185972161	0	0	10	20321	27	1350	66.43	13680	300	13380	67	38.0
3	429	19-JUL-12	20321	98	.482259731312	0	0	98	20223	35	1750	86.54	13320	300	13020	66	37.0
4	430	20-JUL-12	20223	26	.128566483707	0	0	26	20197	30	1500	74.27	13320	300	13020	66	37.0
5	431	21-JUL-12	20197	10	.049512303807	0	0	10	20187	35	1750	86.69	13680	300	13380	68	38.0
6	432	22-JUL-12	20187	16	.079258929014	0	0	16	20171	35	1750	86.76	14040	300	13740	70	39.0
7	433	23-JUL-12	20171	56	.277626295176	0	0	56	20115	38	1900	94.46	13680	300	13380	68	38.0
				231		0	0	231		227	11350		95400	2100	93300	265	67.43

Week		62		FLOCK DETAIL AND DEPLETION						FEED CONSUMPTION			EGGS PRODUCTION				
Wdays	Days	Edate	Opening Birds	Total Mortilty	Mortilty Ratio	Culling	Hen Sale	Total Depletion	Closing Birds	Bags 50 kg	Total Kilo Grams	Gram/Hen	Total Eggs	Broken Eggs	Remeggs	Eggs Crate(360)	Eggs Prod %
1	434	24-JUL-12	20115	95	.472284364902	0	0	95	20020	27	1350	67.43	12240	300	11940	61	34.0
2	435	25-JUL-12	20020	21	.104895104895	0	0	21	19999	31	1550	77.50	11880	300	11580	59	33.0

WEEKLY FLOCK SUMMERY

Flock		FLOCK 6			Shedname		CTL_LAY_1			Total Birds		33919								
Birdtype										Shed Capic		35000								
Week		62			FEED CONSUMPTION							EGGS PRODUCTION								
Wdays	Days	Edate	Opening Birds	Total Mortilty	Mortilty Ratio	Culling	Hen Sale	Total Depletion	Closing Birds	Bags 50 kg	Total Kilo Grams	Gram/Hen	Total Eggs	Broken Eggs	Remeggs	Eggs Crate(360)	Eggs Prod %			
3	436	26-JUL-12	19999	13	.065003250163	0	0	13	19986	25	1250	62.54	12600	300	12300	63	35.0			
4	437	27-JUL-12	19986	6	.03002101471	0	0	6	19980	35	1750	87.59	13320	300	13020	67	37.0			
5	438	28-JUL-12	19980	13	.065065065065	0	0	13	19967	35	1750	87.64	14040	300	13740	70	39.0			
6	439	29-JUL-12	19967	38	.19031401813	0	0	38	19929	25	1250	62.72	14040	300	13740	70	39.0			
7	440	30-JUL-12	19929	219	1.09890109890	0	0	219	19710	25	1250	63.42	12240	300	11940	62	34.0			
				405			0	0	405			203	10150			90360	2100	88260	251	64.57

Week		63			FLOCK DETAIL AND DEPLETION							FEED CONSUMPTION			EGGS PRODUCTION					
Wdays	Days	Edate	Opening Birds	Total Mortilty	Mortilty Ratio	Culling	Hen Sale	Total Depletion	Closing Birds	Bags 50 kg	Total Kilo Grams	Gram/Hen	Total Eggs	Broken Eggs	Remeggs	Eggs Crate(360)	Eggs Prod %			
1	441	31-JUL-12	19710	337	1.70979198377	0	0	337	19373	25	1250	64.52	9720	300	9420	50	27.0			
2	442	01-AUG-12	19373	35	.180663810458	0	0	35	19338	25	1250	64.64	10800	300	10500	56	30.0			
3	443	02-AUG-12	19338	90	.465404902265	0	0	90	19248	26	1300	67.54	11160	300	10860	58	31.0			
4	444	03-AUG-12	19248	54	.280548628429	0	0	54	19194	26	1300	67.73	11880	300	11580	62	33.0			
5	445	04-AUG-12	19194	12	.062519537355	0	0	12	19182	30	1500	78.20	12240	300	11940	64	34.0			
6	446	05-AUG-12	19182	10	.052132207278	0	0	10	19172	30	1500	78.24	12600	300	12300	66	35.0			
7	447	06-AUG-12	19172	15	.078239098686	0	0	15	19157	28	1400	73.08	12600	300	12300	66	35.0			
				553			0	0	553			190	9500			81000	2100	78900	225	60.29

Week		64			FLOCK DETAIL AND DEPLETION							FEED CONSUMPTION			EGGS PRODUCTION					
Wdays	Days	Edate	Opening Birds	Total Mortilty	Mortilty Ratio	Culling	Hen Sale	Total Depletion	Closing Birds	Bags 50 kg	Total Kilo Grams	Gram/Hen	Total Eggs	Broken Eggs	Remeggs	Eggs Crate(360)	Eggs Prod %			
1	448	07-AUG-12	19157	18	.093960432218	0	0	18	19139	25	1250	65.31	11880	300	11580	62	33.0			
2	449	08-AUG-12	19139	40	.208997335284	0	0	40	19099	28	1400	73.30	11160	300	10860	58	31.0			
3	450	09-AUG-12	19099	88	.460757107702	0	0	88	19011	28	1400	73.64	10260	300	9960	54	28.5			
4	451	10-AUG-12	19011	21	.110462363895	0	0	21	18990	29	1450	76.36	11340	300	11040	60	31.5			
5	452	11-AUG-12	18990	8	.042127435492	0	0	8	18982	34	1700	89.56	12600	300	12300	66	35.0			
6	453	12-AUG-12	18982	8	.04214519018	0	0	8	18974	30	1500	79.06	13140	300	12840	69	36.5			
7	454	13-AUG-12	18974	7	.03689258986	0	0	7	18967	32	1600	84.36	13320	300	13020	70	37.0			
				190			0	0	190			206	10300			83700	2100	81600	232.5	62.71

Week		65			FLOCK DETAIL AND DEPLETION							FEED CONSUMPTION			EGGS PRODUCTION				
Wdays	Days	Edate	Opening Birds	Total Mortilty	Mortilty Ratio	Culling	Hen Sale	Total Depletion	Closing Birds	Bags 50 kg	Total Kilo Grams	Gram/Hen	Total Eggs	Broken Eggs	Remeggs	Eggs Crate(360)	Eggs Prod %		
1	455	14-AUG-12	18967	12	.063267780883	0	0	12	18955	30	1500	79.13	12600	300	12300	66	35.0		
2	456	15-AUG-12	18955	11	.058032181482	0	0	11	18944	30	1500	79.18	12240	300	11940	65	34.0		
3	457	16-AUG-12	18944	11	.058065878378	0	0	11	18933	30	1500	79.23	11880	300	11580	63	33.0		
4	458	17-AUG-12	18933	5	.02640891565	0	0	5	18928	30	1500	79.25	12240	300	11940	65	34.0		

WEEKLY FLOCK SUMMERY

Flock		FLOCK 6		Shedname		CTL_LAY_1		Total Birds		33919		Birdtype		Shed Capic		35000	
Week		65		FEED CONSUMPTION						EGGS PRODUCTION							
Wdays	Days	Edate	Opening Birds	Total Mortilty	Mortilty Ratio	Culling	Hen Sale	Total Depletion	Closing Birds	Bags 50 kg	Total Kilo Grams	Gram/Hen	Total Eggs	Broken Eggs	Remeggs	Eggs Crate(360)	Eggs Prod %
5	459	18-AUG-12	18928	50	.264158918005	0	0	50	18878	45	2250	119.19	11520	300	11220	61	32.0
6	460	19-AUG-12	18878	45	.238372708973	0	0	45	18833	25	1250	66.37	11880	300	11580	63	33.0
7	461	20-AUG-12	18833	290	1.53985026284	0	0	290	18543	30	1500	80.89	9360	300	9060	50	26.0
			424			0	0	424		220	11000		81720	2100	79620	227	61.86

Week		66		FLOCK DETAIL AND DEPLETION						FEED CONSUMPTION			EGGS PRODUCTION				
Wdays	Days	Edate	Opening Birds	Total Mortilty	Mortilty Ratio	Culling	Hen Sale	Total Depletion	Closing Birds	Bags 50 kg	Total Kilo Grams	Gram/Hen	Total Eggs	Broken Eggs	Remeggs	Eggs Crate(360)	Eggs Prod %
1	462	21-AUG-12	18543	42	.226500566251	0	0	42	18501	20	1000	54.05	8640	300	8340	47	24.0
2	463	22-AUG-12	18501	20	.108102264742	0	0	20	18481	25	1250	67.64	11520	300	11220	62	32.0
3	464	23-AUG-12	18481	8	.043287700882	0	0	8	18473	30	1500	81.20	11880	300	11580	64	33.0
4	465	24-AUG-12	18473	17	.092026200401	0	0	17	18456	28	1400	75.86	11520	300	11220	62	32.0
5	466	25-AUG-12	18456	23	.124620719549	0	0	23	18433	31	1550	84.09	11880	300	11580	64	33.0
6	467	26-AUG-12	18433	11	.059675581837	0	0	11	18422	30	1500	81.42	10440	300	10140	57	29.0
7	468	27-AUG-12	18422	7	.037998045815	0	0	7	18415	25	1250	67.88	10440	300	10140	57	29.0
			128			0	0	128		189	9450		76320	2100	74220	212	59.00

Week		67		FLOCK DETAIL AND DEPLETION						FEED CONSUMPTION			EGGS PRODUCTION				
Wdays	Days	Edate	Opening Birds	Total Mortilty	Mortilty Ratio	Culling	Hen Sale	Total Depletion	Closing Birds	Bags 50 kg	Total Kilo Grams	Gram/Hen	Total Eggs	Broken Eggs	Remeggs	Eggs Crate(360)	Eggs Prod %
1	469	28-AUG-12	18415	5	.027151778441	0	0	5	18410	30	1500	81.48	11340	300	11040	62	31.5
2	470	29-AUG-12	18410	6	.032590983161	0	0	6	18404	30	1500	81.50	11700	300	11400	64	32.5
3	471	30-AUG-12	18404	18	.097804825038	0	0	18	18386	30	1500	81.58	12060	300	11760	66	33.5
4	472	31-AUG-12	18386	6	.032633525509	0	0	6	18380	30	1500	81.61	12240	300	11940	67	34.0
5	473	01-SEP-12	18380	23	.12513601741	0	0	23	18357	30	1500	81.71	12240	300	11940	67	34.0
6	474	02-SEP-12	18357	22	.119845290625	0	0	22	18335	30	1500	81.81	12240	300	11940	67	34.0
7	475	03-SEP-12	18335	13	.070902645214	0	0	13	18322	30	1500	81.87	12600	300	12300	69	35.0
			93			0	0	93		210	10500		84420	2100	82320	234.5	66.00

Week		68		FLOCK DETAIL AND DEPLETION						FEED CONSUMPTION			EGGS PRODUCTION				
Wdays	Days	Edate	Opening Birds	Total Mortilty	Mortilty Ratio	Culling	Hen Sale	Total Depletion	Closing Birds	Bags 50 kg	Total Kilo Grams	Gram/Hen	Total Eggs	Broken Eggs	Remeggs	Eggs Crate(360)	Eggs Prod %
1	476	04-SEP-12	18322	8	.043663355529	0	0	8	18314	30	1500	81.90	12600	300	12300	69	35.0
2	477	05-SEP-12	18314	5	.027301517964	0	0	5	18309	30	1500	81.93	12960	300	12660	71	36.0
3	478	06-SEP-12	18309	7	.03823256322	0	0	7	18302	30	1500	81.96	12960	300	12660	71	36.0
4	479	07-SEP-12	18302	10	.054638837286	0	0	10	18292	30	1500	82.00	11880	300	11580	65	33.0
5	480	08-SEP-12	18292	7	.038268095342	0	0	7	18285	30	1500	82.03	12240	300	11940	67	34.0
6	481	09-SEP-12	18285	10	.054689636314	0	0	10	18275	30	1500	82.08	12240	300	11940	67	34.0

WEEKLY FLOCK SUMMERY

Flock		FLOCK 6		Shedname		CTL_LAY_1		Total Birds		33919								
Birdtype								Shed Capic		35000								
Week		68		FEED CONSUMPTION						EGGS PRODUCTION								
Wdays	Days	Edate	Opening Birds	Total Mortilty	Mortilty Ratio	Culling	Hen Sale	Total Depletior	Closing Birds	Bags 50 kg	Total Kilo Grams	Gram/Hen	Total Eggs	Broken Eggs	Remeggs	Eggs Crate(360)	Eggs Prod %	
7	482	10-SEP-12	18275	13	.071135430917	0	0	13	18262	30	1500	82.14	12240	300	11940	67	34.0	
				60			0	0	60			210	10500	87120	2100	85020	242	68.14

Week		69		FLOCK DETAIL AND DEPLETION						FEED CONSUMPTION			EGGS PRODUCTION					
Wdays	Days	Edate	Opening Birds	Total Mortilty	Mortilty Ratio	Culling	Hen Sale	Total Depletior	Closing Birds	Bags 50 kg	Total Kilo Grams	Gram/Hen	Total Eggs	Broken Eggs	Remeggs	Eggs Crate(360)	Eggs Prod %	
1	483	11-SEP-12	18262	18	.098565326908	0	0	18	18244	30	1500	82.22	12240	300	11940	67	34.0	
2	484	12-SEP-12	18244	25	.137031352774	0	0	25	18219	30	1500	82.33	11520	300	11220	63	32.0	
3	485	13-SEP-12	18219	32	.175640814534	0	0	32	18187	30	1500	82.48	12240	300	11940	67	34.0	
4	486	14-SEP-12	18187	21	.115467091879	0	0	21	18166	42	2100	115.60	12240	300	11940	67	34.0	
5	487	15-SEP-12	18166	6	.033028734999	0	0	6	18160	30	1500	82.60	12600	300	12300	69	35.0	
6	488	16-SEP-12	18160	5	.027533039648	0	0	5	18155	30	1500	82.62	13320	300	13020	73	37.0	
7	489	17-SEP-12	18155	10	.055081244836	0	0	10	18145	31	1550	85.42	12960	300	12660	71	36.0	
				117			0	0	117			223	11150	87120	2100	85020	242	68.14

Week		70		FLOCK DETAIL AND DEPLETION						FEED CONSUMPTION			EGGS PRODUCTION					
Wdays	Days	Edate	Opening Birds	Total Mortilty	Mortilty Ratio	Culling	Hen Sale	Total Depletior	Closing Birds	Bags 50 kg	Total Kilo Grams	Gram/Hen	Total Eggs	Broken Eggs	Remeggs	Eggs Crate(360)	Eggs Prod %	
1	490	18-SEP-12	18145	6	.033066960595	0	0	6	18139	44	2200	121.29	12600	300	12300	69	35.0	
2	491	19-SEP-12	18139	6	.033077898451	0	0	6	18133	32	1600	88.24	12240	300	11940	68	34.0	
3	492	20-SEP-12	18133	3	.016544421772	0	0	3	18130	0	0	0.00	12240	300	11940	68	34.0	
4	493	21-SEP-12	18130	5	.027578599007	0	0	5	18125	26	1300	71.72	12240	300	11940	68	34.0	
5	494	22-SEP-12	18125	12	.066206896552	0	0	12	18113	23	1150	63.49	11880	300	11580	66	33.0	
6	495	23-SEP-12	18113	3	.016562689781	0	0	3	18110	33	1650	91.11	11880	300	11580	66	33.0	
7	496	24-SEP-12	18110	8	.044174489232	0	0	8	18102	28	1400	77.34	11880	300	11580	66	33.0	
				43			0	0	43			186	9300	84960	2100	82860	236	67.29

Week		71		FLOCK DETAIL AND DEPLETION						FEED CONSUMPTION			EGGS PRODUCTION					
Wdays	Days	Edate	Opening Birds	Total Mortilty	Mortilty Ratio	Culling	Hen Sale	Total Depletior	Closing Birds	Bags 50 kg	Total Kilo Grams	Gram/Hen	Total Eggs	Broken Eggs	Remeggs	Eggs Crate(360)	Eggs Prod %	
1	497	25-SEP-12	18102	2	.011048502928	0	0	2	18100	28	1400	77.35	11880	300	11580	66	33.0	
2	498	26-SEP-12	18100	6	.033149171271	0	0	6	18094	31	1550	85.66	11520	300	11220	64	32.0	
3	499	27-SEP-12	18094	3	.016580081795	0	0	3	18091	27	1350	74.62	11520	300	11220	64	32.0	
4	500	28-SEP-12	18091	6	.033165662484	0	0	6	18085	28	1400	77.41	11520	300	11220	64	32.0	
5	501	29-SEP-12	18085	5	.027647221454	0	0	5	18080	28	1400	77.43	11520	300	11220	64	32.0	
6	502	30-SEP-12	18080	12	.066371681416	0	0	12	18068	22	1100	60.88	11520	300	11220	64	32.0	
7	503	01-OCT-12	18068	8	.044277175116	0	0	8	18060	33	1650	91.36	11520	300	11220	64	32.0	
				42			0	0	42			197	9850	81000	2100	78900	225	64.29

WEEKLY FLOCK SUMMERY

Flock		FLOCK 6		Shedname		CTL_LAY_1		Total Birds		33919		Birdtype		Shed Capic		35000	
Week		72		FLOCK DETAIL AND DEPLETION						FEED CONSUMPTION			EGGS PRODUCTION				
Wdays	Days	Edate	Opening Birds	Total Mortilty	Mortilty Ratio	Culling	Hen Sale	Total Depletion	Closing Birds	Bags 50 kg	Total Kilo Grams	Gram/Hen	Total Eggs	Broken Eggs	Remeggs	Eggs Crate(360)	Eggs Prod %
1	504	02-OCT-12	18060	28	.15503875969	0	0	28	18032	30	1500	83.19	11880	300	11580	66	33.0
2	505	03-OCT-12	18032	8	.044365572316	0	0	8	18024	30	1500	83.22	12600	300	12300	70	35.0
3	506	04-OCT-12	18024	7	.038837106081	0	0	7	18017	32	1600	88.81	12780	300	12480	71	35.5
4	507	05-OCT-12	18017	2	.011100627185	0	0	2	18015	26	1300	72.16	13140	300	12840	73	36.5
5	508	06-OCT-12	18015	7	.038856508465	0	0	7	18008	29	1450	80.52	13140	300	12840	73	36.5
6	509	07-OCT-12	18008	3	.01665926255	0	0	3	18005	29	1450	80.53	12600	300	12300	70	35.0
7	510	08-OCT-12	18005	3	.016662038323	0	0	3	18002	31	1550	86.10	12240	300	11940	68	34.0
				58		0	0	58		207	10350		88380	2100	86280	245.5	70.14

Week		73		FLOCK DETAIL AND DEPLETION						FEED CONSUMPTION			EGGS PRODUCTION				
Wdays	Days	Edate	Opening Birds	Total Mortilty	Mortilty Ratio	Culling	Hen Sale	Total Depletion	Closing Birds	Bags 50 kg	Total Kilo Grams	Gram/Hen	Total Eggs	Broken Eggs	Remeggs	Eggs Crate(360)	Eggs Prod %
1	511	09-OCT-12	18002	5	.027774691701	0	0	5	17997	33	1650	91.68	12240	300	11940	68	34.0
2	512	10-OCT-12	17997	3	.016669444907	0	0	3	17994	32	1600	88.92	12600	300	12300	70	35.0
3	513	11-OCT-12	17994	2	.01111481605	0	0	2	17992	33	1650	91.71	12600	300	12300	70	35.0
4	514	12-OCT-12	17992	4	.022232103157	0	0	4	17988	34	1700	94.51	12240	300	11940	68	34.0
5	515	13-OCT-12	17988	1	.00555926173	0	0	1	17987	33	1650	91.73	12600	300	12300	70	35.0
6	516	14-OCT-12	17987	3	.016678712403	0	0	3	17984	36	1800	100.09	12240	300	11940	68	34.0
7	517	15-OCT-12	17984	3	.016681494662	0	0	3	17981	36	1800	100.11	12600	300	12300	70	35.0
				21		0	0	21		237	11850		87120	2100	85020	242	69.14

Week		74		FLOCK DETAIL AND DEPLETION						FEED CONSUMPTION			EGGS PRODUCTION				
Wdays	Days	Edate	Opening Birds	Total Mortilty	Mortilty Ratio	Culling	Hen Sale	Total Depletion	Closing Birds	Bags 50 kg	Total Kilo Grams	Gram/Hen	Total Eggs	Broken Eggs	Remeggs	Eggs Crate(360)	Eggs Prod %
1	518	16-OCT-12	17981	2	.011122851899	0	0	2	17979	35	1750	97.34	12600	300	12300	70	35.0
2	519	17-OCT-12	17979	3	.016686133823	0	0	3	17976	32	1600	89.01	12600	300	12300	70	35.0
3	520	18-OCT-12	17976	1	.005562972853	0	0	1	17975	35	1750	97.36	13200	300	12900	73	36.7
4	521	19-OCT-12	17975	4	.022253129346	0	0	4	17971	35	1750	97.38	13170	300	12870	73	36.6
5	522	20-OCT-12	17971	6	.033387123699	0	0	6	17965	36	1800	100.19	13500	300	13200	75	37.5
6	523	21-OCT-12	17965	6	.033398274422	0	0	6	17959	30	1500	83.52	12750	300	12450	71	35.4
7	524	22-OCT-12	17959	4	.022272955064	0	0	4	17955	36	1800	100.25	12780	300	12480	71	35.5
				26		0	0	26		239	11950		90600	2100	88500	251.66667	71.86

Week		75		FLOCK DETAIL AND DEPLETION						FEED CONSUMPTION			EGGS PRODUCTION				
Wdays	Days	Edate	Opening Birds	Total Mortilty	Mortilty Ratio	Culling	Hen Sale	Total Depletion	Closing Birds	Bags 50 kg	Total Kilo Grams	Gram/Hen	Total Eggs	Broken Eggs	Remeggs	Eggs Crate(360)	Eggs Prod %
1	525	23-OCT-12	17955	1	.005569479254	0	0	1	17954	36	1800	100.26	13050	300	12750	73	36.3
2	526	24-OCT-12	17954	1	.005569789462	0	0	1	17953	40	2000	111.40	12960	300	12660	72	36.0

WEEKLY FLOCK SUMMERY

Flock		FLOCK 6		Shedname		CTL_LAY_1		Total Birds		33919							
Birdtype								Shed Capic		35000							
Week		75		FEED CONSUMPTION						EGGS PRODUCTION							
Wdays	Days	Edate	Opening Birds	Total Mortilty	Mortilty Ratio	Culling	Hen Sale	Total Depletion	Closing Birds	Bags 50 kg	Total Kilo Grams	Gram/Hen	Total Eggs	Broken Eggs	Remeggs	Eggs Crate(360)	Eggs Prod %
3	527	25-OCT-12	17953	4	.022280398819	0	0	4	17949	40	2000	111.43	12960	300	12660	72	36.0
4	528	26-OCT-12	17949	0	0	0	0	0	17949	40	2000	111.43	12960	300	12660	72	36.0
5	529	27-OCT-12	17949	3	.016714023065	0	0	3	17946	40	2000	111.45	12960	300	12660	72	36.0
6	530	28-OCT-12	17946	4	.022289089491	0	0	4	17942	36	1800	100.32	13140	300	12840	73	36.5
7	531	29-OCT-12	17942	2	.011147029317	0	0	2	17940	35	1750	97.55	12960	300	12660	72	36.0
				15		0	0	15		267	13350		90990	2100	88890	252.75	72.29

Week		76		FLOCK DETAIL AND DEPLETION						FEED CONSUMPTION			EGGS PRODUCTION				
Wdays	Days	Edate	Opening Birds	Total Mortilty	Mortilty Ratio	Culling	Hen Sale	Total Depletion	Closing Birds	Bags 50 kg	Total Kilo Grams	Gram/Hen	Total Eggs	Broken Eggs	Remeggs	Eggs Crate(360)	Eggs Prod %
1	532	30-OCT-12	17940	2	.011148272018	0	0	2	17938	36	1800	100.35	12960	300	12660	72	36.0
2	533	31-OCT-12	17938	2	.011149514996	0	0	2	17936	35	1750	97.57	12960	300	12660	72	36.0
3	534	01-NOV-12	17936	2	.011150758252	0	0	2	17934	35	1750	97.58	12960	300	12660	72	36.0
4	535	02-NOV-12	17934	2	.011152001784	0	0	2	17932	35	1750	97.59	12600	300	12300	70	35.0
5	536	03-NOV-12	17932	2	.011153245594	0	0	2	17930	35	1750	97.60	12600	300	12300	70	35.0
6	537	04-NOV-12	17930	1	.005577244841	0	0	1	17929	35	1750	97.61	12600	300	12300	70	35.0
7	538	05-NOV-12	17929	1	.005577555915	0	0	1	17928	35	1750	97.61	12600	300	12300	70	35.0
				12		0	0	12		246	12300		89280	2100	87180	248	70.86

Week		77		FLOCK DETAIL AND DEPLETION						FEED CONSUMPTION			EGGS PRODUCTION				
Wdays	Days	Edate	Opening Birds	Total Mortilty	Mortilty Ratio	Culling	Hen Sale	Total Depletion	Closing Birds	Bags 50 kg	Total Kilo Grams	Gram/Hen	Total Eggs	Broken Eggs	Remeggs	Eggs Crate(360)	Eggs Prod %
1	539	06-NOV-12	17928	1	.005577867024	0	0	1	17927	35	1750	97.62	12600	300	12300	70	35.0
2	540	07-NOV-12	17927	1	.005578178167	0	0	1	17926	35	1750	97.62	12600	300	12300	70	35.0
3	541	08-NOV-12	25345	1	.003945551391	0	0	1	25344	50	2500	98.64	19080	300	18780	75	53.0
4	542	09-NOV-12	25344	1	.003945707071	0	0	1	25343	50	2500	98.65	19440	300	19140	77	54.0
5	543	10-NOV-12	25343	1	.003945862763	0	0	1	25342	48	2400	94.70	19440	300	19140	77	54.0
6	544	11-NOV-12	25342	1	.003946018467	0	0	1	25341	48	2400	94.71	18360	300	18060	72	51.0
7	545	12-NOV-12	25341	1	.003946174184	0	0	1	25340	48	2400	94.71	18360	300	18060	72	51.0
				7		0	0	7		314	15700		119880	2100	117780	333	73.29

Week		78		FLOCK DETAIL AND DEPLETION						FEED CONSUMPTION			EGGS PRODUCTION				
Wdays	Days	Edate	Opening Birds	Total Mortilty	Mortilty Ratio	Culling	Hen Sale	Total Depletion	Closing Birds	Bags 50 kg	Total Kilo Grams	Gram/Hen	Total Eggs	Broken Eggs	Remeggs	Eggs Crate(360)	Eggs Prod %
1	546	13-NOV-12	25340	1	.003946329913	0	0	1	25339	30	1500	59.20	18360	300	18060	72	51.0
2	547	14-NOV-12	25339	1	.003946485655	0	0	1	25338	38	1900	74.99	18720	300	18420	74	52.0
3	548	15-NOV-12	25338	1	.003946641408	0	0	1	25337	48	2400	94.72	18000	300	17700	71	50.0
4	549	16-NOV-12	25337	1	.003946797174	0	0	1	25336	50	2500	98.67	18000	300	17700	71	50.0

WEEKLY FLOCK SUMMERY

Flock		FLOCK 6		Shedname		CTL_LAY_1		Total Birds		33919		Birdtype		Shed Capic		35000	
Week		78		FEED CONSUMPTION						EGGS PRODUCTION							
Wdays	Days	Edate	Opening Birds	Total Mortilty	Mortilty Ratio	Culling	Hen Sale	Total Depletion	Closing Birds	Bags 50 kg	Total Kilo Grams	Gram/Hen	Total Eggs	Broken Eggs	Remeggs	Eggs Crate(360)	Eggs Prod %
5	550	17-NOV-12	25336	1	.003946952952	0	0	1	25335	40	2000	78.94	17640	300	17340	70	49.0
6	551	18-NOV-12	25335	1	.003947108743	0	0	1	25334	48	2400	94.73	18360	300	18060	72	51.0
7	552	19-NOV-12	25334	1	.003947264546	0	0	1	25333	48	2400	94.74	18720	300	18420	74	52.0
			7			0	0	7				127800	2100	125700	355	72.00	

Week		79		FLOCK DETAIL AND DEPLETION						FEED CONSUMPTION			EGGS PRODUCTION				
Wdays	Days	Edate	Opening Birds	Total Mortilty	Mortilty Ratio	Culling	Hen Sale	Total Depletion	Closing Birds	Bags 50 kg	Total Kilo Grams	Gram/Hen	Total Eggs	Broken Eggs	Remeggs	Eggs Crate(360)	Eggs Prod %
1	553	20-NOV-12	25333	1	.003947420361	0	0	1	25332	48	2400	94.74	18720	300	18420	74	52.0
2	554	21-NOV-12	25332	1	.003947576188	0	0	1	25331	48	2400	94.75	18000	300	17700	71	50.0
3	555	22-NOV-12	25331	1	.003947732028	0	0	1	25330	48	2400	94.75	17640	300	17340	70	49.0
4	556	23-NOV-12	25330	1	.00394788788	0	0	1	25329	50	2500	98.70	17640	300	17340	70	49.0
5	557	24-NOV-12	25329	1	.003948043744	0	0	1	25328	50	2500	98.71	18360	300	18060	72	51.0
6	558	25-NOV-12	25328	1	.003948199621	0	0	1	25327	48	2400	94.76	18720	300	18420	74	52.0
7	559	26-NOV-12	25327	2	.00789671102	0	0	2	25325	48	2400	94.77	18360	300	18060	72	51.0
			8			0	0	8				127440	2100	125340	354	71.86	

Week		80		FLOCK DETAIL AND DEPLETION						FEED CONSUMPTION			EGGS PRODUCTION				
Wdays	Days	Edate	Opening Birds	Total Mortilty	Mortilty Ratio	Culling	Hen Sale	Total Depletion	Closing Birds	Bags 50 kg	Total Kilo Grams	Gram/Hen	Total Eggs	Broken Eggs	Remeggs	Eggs Crate(360)	Eggs Prod %
1	560	27-NOV-12	25325	2	.00789733465	0	0	2	25323	50	2500	98.72	18360	300	18060	73	51.0
2	561	28-NOV-12	25323	3	.011846937567	0	0	3	25320	48	2400	94.79	18000	300	17700	71	50.0
3	562	29-NOV-12	25320	5	.019747235387	0	0	5	25315	48	2400	94.81	18000	300	17700	71	50.0
4	563	30-NOV-12	25315	3	.011850681414	0	0	3	25312	48	2400	94.82	18000	300	17700	71	50.0
5	564	01-DEC-12	25312	10	.039506953224	0	0	10	25302	48	2400	94.85	17640	300	17340	70	49.0
6	565	02-DEC-12	25302	6	.023713540432	0	0	6	25296	48	2400	94.88	17640	300	17340	70	49.0
7	566	03-DEC-12	25296	7	.027672359266	0	0	7	25289	50	2500	98.86	18000	300	17700	71	50.0
			36			0	0	36				125640	2100	123540	349	71.00	

Week		81		FLOCK DETAIL AND DEPLETION						FEED CONSUMPTION			EGGS PRODUCTION				
Wdays	Days	Edate	Opening Birds	Total Mortilty	Mortilty Ratio	Culling	Hen Sale	Total Depletion	Closing Birds	Bags 50 kg	Total Kilo Grams	Gram/Hen	Total Eggs	Broken Eggs	Remeggs	Eggs Crate(360)	Eggs Prod %
1	567	04-DEC-12	25289	4	.015817153703	0	0	4	25285	50	2500	98.87	18360	300	18060	73	51.0
2	568	05-DEC-12	25285	7	.027684397864	0	0	7	25278	52	2600	102.86	18360	300	18060	73	51.0
3	569	06-DEC-12	25278	3	.011868027534	0	0	3	25275	48	2400	94.96	18360	300	18060	73	51.0
4	570	07-DEC-12	25275	5	.01978239367	0	0	5	25270	52	2600	102.89	18000	300	17700	71	50.0
5	571	08-DEC-12	25270	5	.019786307875	0	0	5	25265	52	2600	102.91	18000	300	17700	71	50.0
6	572	09-DEC-12	25265	4	.015832178904	0	0	4	25261	50	2500	98.97	18000	300	17700	71	50.0

WEEKLY FLOCK SUMMERY

Flock		FLOCK 6		Shedname		CTL_LAY_1		Total Birds		33919							
Birdtype								Shed Capic		35000							
Week		81		FEED CONSUMPTION					EGGS PRODUCTION								
Wdays	Days	Edate	Opening Birds	Total Mortilty	Mortilty Ratio	Culling	Hen Sale	Total Depletior	Closing Birds	Bags 50 kg	Total Kilo Grams	Gram/Hen	Total Eggs	Broken Eggs	Remeggs	Eggs Crate(360)	Eggs Prod %
7	573	10-DEC-12	25261	8	.031669371759	0	0	8	25253	52	2600	102.96	18000	330	17670	71	50.0
				36			0	0	36	356	17800		127080	2130	124950	353	71.86

Week		82		FLOCK DETAIL AND DEPLETION					FEED CONSUMPTION					EGGS PRODUCTION				
Wdays	Days	Edate	Opening Birds	Total Mortilty	Mortilty Ratio	Culling	Hen Sale	Total Depletior	Closing Birds	Bags 50 kg	Total Kilo Grams	Gram/Hen	Total Eggs	Broken Eggs	Remeggs	Eggs Crate(360)	Eggs Prod %	
1	574	11-DEC-12	25253	3	.01187977666	0	0	3	25250	48	2400	95.05	18000	360	17640	71	50.0	
2	575	12-DEC-12	25250	5	.019801980198	0	0	5	25245	50	2500	99.03	18000	300	17700	71	50.0	
3	576	13-DEC-12	25245	5	.019805902159	0	0	5	25240	52	2600	103.01	18000	300	17700	71	50.0	
4	577	14-DEC-12	25240	2	.007923930269	0	0	2	25238	50	2500	99.06	18000	300	17700	71	50.0	
5	578	15-DEC-12	25238	2	.007924558206	0	0	2	25236	50	2500	99.06	17640	300	17340	70	49.0	
6	579	16-DEC-12	25236	2	.007925186242	0	0	2	25234	50	2500	99.07	17640	300	17340	70	49.0	
7	580	17-DEC-12	25234	6	.023777443132	0	0	6	25228	52	2600	103.06	17640	300	17340	70	49.0	
				25			0	0	25	352	17600		124920	2160	122760	347	70.57	

Week		83		FLOCK DETAIL AND DEPLETION					FEED CONSUMPTION					EGGS PRODUCTION				
Wdays	Days	Edate	Opening Birds	Total Mortilty	Mortilty Ratio	Culling	Hen Sale	Total Depletior	Closing Birds	Bags 50 kg	Total Kilo Grams	Gram/Hen	Total Eggs	Broken Eggs	Remeggs	Eggs Crate(360)	Eggs Prod %	
1	581	18-DEC-12	25228	5	.019819248454	0	0	5	25223	50	2500	99.12	17280	300	16980	69	48.0	
2	582	19-DEC-12	25223	4	.015858541807	0	0	4	25219	52	2600	103.10	17280	300	16980	69	48.0	
3	583	20-DEC-12	25219	3	.011895792855	0	0	3	25216	49	2450	97.16	17280	300	16980	69	48.0	
4	584	21-DEC-12	25216	3	.011897208122	0	0	3	25213	48	2400	95.19	17640	300	17340	70	49.0	
5	585	22-DEC-12	25213	3	.011898623726	0	0	3	25210	50	2500	99.17	17640	300	17340	70	49.0	
6	586	23-DEC-12	25210	5	.019833399445	0	0	5	25205	52	2600	103.15	17640	300	17340	70	49.0	
7	587	24-DEC-12	25205	4	.01586986709	0	0	4	25201	50	2500	99.20	17640	300	17340	70	49.0	
				27			0	0	27	351	17550		122400	2100	120300	340	69.57	

Week		84		FLOCK DETAIL AND DEPLETION					FEED CONSUMPTION					EGGS PRODUCTION				
Wdays	Days	Edate	Opening Birds	Total Mortilty	Mortilty Ratio	Culling	Hen Sale	Total Depletior	Closing Birds	Bags 50 kg	Total Kilo Grams	Gram/Hen	Total Eggs	Broken Eggs	Remeggs	Eggs Crate(360)	Eggs Prod %	
1	588	25-DEC-12	25201	7	.027776675529	0	0	7	25194	52	2600	103.20	17640	300	17340	70	49.0	
2	589	26-DEC-12	25194	4	.015876796063	0	0	4	25190	50	2500	99.25	17640	300	17340	70	49.0	
3	590	27-DEC-12	25190	5	.019849146487	0	0	5	25185	50	2500	99.27	17280	300	16980	69	48.0	
4	591	28-DEC-12	25185	5	.019853087155	0	0	5	25180	50	2500	99.29	17280	300	16980	69	48.0	
5	592	29-DEC-12	25180	7	.027799841144	0	0	7	25173	52	2600	103.29	17640	300	17340	70	49.0	
6	593	30-DEC-12	25173	7	.027807571604	0	0	7	25166	50	2500	99.34	17640	300	17340	70	49.0	
7	594	31-DEC-12	25166	3	.011920845585	0	0	3	25163	52	2600	103.33	17280	300	16980	69	48.0	
				38			0	0	38	356	17800		122400	2100	120300	340	69.57	

WEEKLY FLOCK SUMMERY

Flock		FLOCK 6		Shedname		CTL_LAY_1		Total Birds		33919							
Birdtype								Shed Capic		35000							
Week		85		FLOCK DETAIL AND DEPLETION						FEED CONSUMPTION			EGGS PRODUCTION				
Wdays	Days	Edate	Opening Birds	Total Mortilty	Mortilty Ratio	Culling	Hen Sale	Total Depletion	Closing Birds	Bags 50 kg	Total Kilo Grams	Gram/Hen	Total Eggs	Broken Eggs	Remeggs	Eggs Crate(360)	Eggs Prod %
1	595	01-JAN-13	25163	3	.01192226682	0	0	3	25160	50	2500	99.36	17640	300	17340	70	49.0
2	596	02-JAN-13	25160	4	.015898251192	0	0	4	25156	50	2500	99.38	17640	300	17340	70	49.0
3	597	03-JAN-13	25156	7	.027826363492	0	0	7	25149	52	2600	103.38	17640	300	17340	70	49.0
4	598	04-JAN-13	25149	6	.023857807467	0	0	6	25143	50	2500	99.43	17640	300	17340	70	49.0
5	599	05-JAN-13	25143	8	.031818001034	0	0	8	25135	50	2500	99.46	17640	300	17340	70	49.0
6	600	06-JAN-13	25135	7	.027849612095	0	0	7	25128	50	2500	99.49	16920	300	16620	67	47.0
7	601	07-JAN-13	25128	4	.015918497294	0	0	4	25124	50	2500	99.51	16920	300	16620	67	47.0
				39		0	0	39		352	17600		122040	2100	119940	339	69.14

Week		86		FLOCK DETAIL AND DEPLETION						FEED CONSUMPTION			EGGS PRODUCTION				
Wdays	Days	Edate	Opening Birds	Total Mortilty	Mortilty Ratio	Culling	Hen Sale	Total Depletion	Closing Birds	Bags 50 kg	Total Kilo Grams	Gram/Hen	Total Eggs	Broken Eggs	Remeggs	Eggs Crate(360)	Eggs Prod %
1	602	08-JAN-13	25124	6	.023881547524	0	0	6	25118	50	2500	99.53	16560	300	16260	66	46.0
2	603	09-JAN-13	25118	2	.00796241739	0	0	2	25116	50	2500	99.54	16560	300	16260	66	46.0
3	604	10-JAN-13	25116	11	.043796782927	0	0	11	25105	50	2500	99.58	16560	300	16260	66	46.0
4	605	11-JAN-13	25105	4	.01593308106	0	0	4	25101	50	2500	99.60	16920	300	16620	67	47.0
5	606	12-JAN-13	25101	3	.011951715071	0	0	3	25098	50	2500	99.61	17280	300	16980	69	48.0
6	607	13-JAN-13	25098	6	.023906287354	0	0	6	25092	52	2600	103.62	17280	300	16980	69	48.0
7	608	14-JAN-13	25092	6	.023912003826	0	0	6	25086	50	2500	99.66	17280	300	16980	69	48.0
				38		0	0	38		352	17600		118440	2100	116340	329	67.43

Week		87		FLOCK DETAIL AND DEPLETION						FEED CONSUMPTION			EGGS PRODUCTION				
Wdays	Days	Edate	Opening Birds	Total Mortilty	Mortilty Ratio	Culling	Hen Sale	Total Depletion	Closing Birds	Bags 50 kg	Total Kilo Grams	Gram/Hen	Total Eggs	Broken Eggs	Remeggs	Eggs Crate(360)	Eggs Prod %
1	609	15-JAN-13	25086	2	.007972574344	0	0	2	25084	50	2500	99.67	17280	300	16980	69	48.0
2	610	16-JAN-13	25084	5	.019933025036	0	0	5	25079	48	2400	95.70	16920	300	16620	67	47.0
3	611	17-JAN-13	25079	7	.027911798716	0	0	7	25072	50	2500	99.71	16920	300	16620	67	47.0
4	612	18-JAN-13	25072	6	.023931078494	0	0	6	25066	50	2500	99.74	16920	300	16620	68	47.0
5	613	19-JAN-13	25066	6	.02393680683	0	0	6	25060	52	2600	103.75	17100	300	16800	68	47.5
6	614	20-JAN-13	25060	10	.039904229848	0	0	10	25050	52	2600	103.79	16740	300	16440	67	46.5
7	615	21-JAN-13	25050	7	.027944111776	0	0	7	25043	50	2500	99.83	16740	300	16440	67	46.5
				43		0	0	43		352	17600		118620	2100	116520	329.5	67.57

Week		88		FLOCK DETAIL AND DEPLETION						FEED CONSUMPTION			EGGS PRODUCTION				
Wdays	Days	Edate	Opening Birds	Total Mortilty	Mortilty Ratio	Culling	Hen Sale	Total Depletion	Closing Birds	Bags 50 kg	Total Kilo Grams	Gram/Hen	Total Eggs	Broken Eggs	Remeggs	Eggs Crate(360)	Eggs Prod %
1	616	22-JAN-13	25043	4	.015972527253	0	0	4	25039	48	2400	95.85	16560	300	16260	66	46.0
2	617	23-JAN-13	25039	4	.015975078877	0	0	4	25035	50	2500	99.86	16560	300	16260	66	46.0

WEEKLY FLOCK SUMMERY

Flock		FLOCK 6			Shedname		CTL_LAY_1			Total Birds		33919						
Birdtype										Shed Capic		35000						
Week		88			FEED CONSUMPTION							EGGS PRODUCTION						
Wdays	Days	Edate	Opening Birds	Total Mortilty	Mortilty Ratio	Culling	Hen Sale	Total Depletior	Closing Birds	Bags 50 kg	Total Kilo Grams	Gram/Hen	Total Eggs	Broken Eggs	Remeggs	Eggs Crate(360)	Eggs Prod %	
3	618	24-JAN-13	25035	4	.015977631316	0	0	4	25031	50	2500	99.88	16560	300	16260	66	46.0	
4	619	25-JAN-13	25031	9	.035955415285	0	0	9	25022	50	2500	99.91	16560	360	16200	66	46.0	
5	620	26-JAN-13	25022	8	.031971864759	0	0	8	25014	48	2400	95.95	16560	360	16200	66	46.0	
6	621	27-JAN-13	25014	5	.019988806268	0	0	5	25009	50	2500	99.96	16560	360	16200	66	46.0	
7	622	28-JAN-13	25009	7	.027989923627	0	0	7	25002	50	2500	99.99	16560	360	16200	66	46.0	
				41			0	0	41	346		17300		115920	2340	113580	322	66.00

Week		89			FLOCK DETAIL AND DEPLETION							FEED CONSUMPTION			EGGS PRODUCTION				
Wdays	Days	Edate	Opening Birds	Total Mortilty	Mortilty Ratio	Culling	Hen Sale	Total Depletior	Closing Birds	Bags 50 kg	Total Kilo Grams	Gram/Hen	Total Eggs	Broken Eggs	Remeggs	Eggs Crate(360)	Eggs Prod %		
1	623	29-JAN-13	25002	8	.031997440205	0	0	8	24994	50	2500	100.02	16560	360	16200	66	46.0		
2	624	30-JAN-13	24994	2	.008001920461	0	0	2	24992	44	2200	88.03	16560	360	16200	66	46.0		
3	625	31-JAN-13	24992	7	.028008962868	0	0	7	24985	50	2500	100.06	16560	360	16200	66	46.0		
4	626	01-FEB-13	24985	5	.020012007204	0	0	5	24980	50	2500	100.08	16560	360	16200	66	46.0		
5	627	02-FEB-13	24980	7	.028022417934	0	0	7	24973	48	2400	96.10	16560	360	16200	66	46.0		
6	628	03-FEB-13	24973	4	.016017298683	0	0	4	24969	50	2500	100.12	16200	360	15840	65	45.0		
7	629	04-FEB-13	24969	4	.016019864632	0	0	4	24965	50	2500	100.14	16200	360	15840	65	45.0		
				37			0	0	37	342		17100		115200	2520	112680	320	65.71	

Week		90			FLOCK DETAIL AND DEPLETION							FEED CONSUMPTION			EGGS PRODUCTION				
Wdays	Days	Edate	Opening Birds	Total Mortilty	Mortilty Ratio	Culling	Hen Sale	Total Depletior	Closing Birds	Bags 50 kg	Total Kilo Grams	Gram/Hen	Total Eggs	Broken Eggs	Remeggs	Eggs Crate(360)	Eggs Prod %		
1	630	05-FEB-13	24965	6	.024033647106	0	0	6	24959	50	2500	100.16	16200	360	15840	65	45.0		
2	631	06-FEB-13	24959	6	.024039424656	0	240	6	24713	50	2500	100.19	15840	360	15480	63	44.0		
3	632	07-FEB-13	24713	13	.052603892688	0	182	13	24518	50	2500	101.21	15480	360	15120	63	43.0		
4	633	08-FEB-13	24518	8	.032629088833	0	390	8	24120	48	2400	97.92	15120	360	14760	62	42.0		
5	634	09-FEB-13	24120	15	.062189054726	0	1235	15	22870	48	2400	99.56	14400	360	14040	60	40.0		
6	635	10-FEB-13	22870	15	.06558810669	0	1205	15	21650	48	2400	105.01	14040	360	13680	61	39.0		
7	636	11-FEB-13	21650	35	.161662817552	0	9177	35	12438	20	1000	46.26	9720	360	9360	45	27.0		
				98			0	12429	98	314		15700		100800	2520	98280	280	59.86	

Week		91			FLOCK DETAIL AND DEPLETION							FEED CONSUMPTION			EGGS PRODUCTION				
Wdays	Days	Edate	Opening Birds	Total Mortilty	Mortilty Ratio	Culling	Hen Sale	Total Depletior	Closing Birds	Bags 50 kg	Total Kilo Grams	Gram/Hen	Total Eggs	Broken Eggs	Remeggs	Eggs Crate(360)	Eggs Prod %		
1	637	12-FEB-13	12438	38	.305515356167	0	5700	38	6700	10	500	40.32	6480	360	6120	52	18.0		
2	638	13-FEB-13	6700	36	.537313432836	0	4804	36	1860	3	150	22.51	1440	360	1080	22	4.0		
3	639	14-FEB-13	1860	60	3.22580645161	0	1800	60	0	0	0	0.00	0	0	0	0	0.0		
				134			0	12304	134	13		650		7920	720	7200	22	24.67	

WEEKLY FLOCK SUMMERY

6524

205

25075

6729

20276

1,013,800

7504634

219330

7285304

20846.21
